



SL-881 6G Handheld HDMI/MHL Audio and Video Generator/Analyzer

User Guide

Simplay-UG-02001-C

October 2016

Contents

| | |
|--------------------------------------------------------------------|----|
| 1. Overview | 5 |
| 1.1. SL-881 Hardware | 5 |
| 1.2. SL-881 Controls, Indicators, and Interface Connectors | 6 |
| 1.3. SL-881 Test Modes | 7 |
| 1.3.1. Standard Test Mode | 7 |
| 1.3.2. Enhanced Test Mode | 8 |
| 1.3.3. Devices under Test | 9 |
| 1.4. Inside the Box | 9 |
| 2. The SL-881 in Standard Test Mode | 10 |
| 2.1. Setting up Connections | 10 |
| 2.2. Generating Video Signals When Running with Sink Devices | 11 |
| 2.3. Analyzing Input Signal When Running with Source Devices | 13 |
| 2.4. Reading EDID Contents from HDMI OUT Ports | 14 |
| 2.5. Loading EDID Data to the HDMI IN Port | 15 |
| 2.6. Performing Factory Test When Running with Sink Devices | 16 |
| 3. Optional SL-881 AVG Software | 17 |
| 3.1. Downloading the SL-881 AVG Software | 17 |
| 3.1.1. Contents of the Software Package | 17 |
| 3.2. System Requirements | 17 |
| 3.3. Installing the SL-881 AVG Driver | 18 |
| 3.4. Installing the SL-881 AVG Software | 19 |
| 3.5. Licensing | 20 |
| 3.5.1. Getting License File | 20 |
| 3.5.2. Loading License File | 22 |
| 4. Enhanced SL-881 AVG Test Mode | 24 |
| 4.1. Performing EDDC Compliance Test | 24 |
| 4.2. Running Cable Loop-back Test | 30 |
| 4.2.1. Single mode | 30 |
| 4.2.2. Batch mode | 32 |
| 4.3. Monitoring DDC | 34 |
| 4.4. Editing EDID | 38 |
| 4.5. Running with Console Application of Windows | 40 |
| 4.5.1. Hardware and Software Requirements | 40 |
| 4.5.2. Getting Started | 40 |
| 4.5.3. Examples of Parameter Usages | 43 |
| Appendix A. Internal Firmware Upgrade | 44 |
| Appendix B. LCD Touch Screen Position Calibration | 47 |
| References | 48 |
| Revision History | 49 |

Figures

| | |
|--------------------------------------------------------------------------|----|
| Figure 1.1. SL-881 AVG – Top View | 5 |
| Figure 1.2. SL-881 AVG – Front Panel | 5 |
| Figure 1.3. SL-881 AVG – Rear Panel | 5 |
| Figure 1.4. Locating SL-881 AVG Components – Top View | 6 |
| Figure 1.5. LCD Touch Screen Main Window | 8 |
| Figure 2.1. Connecting with HDMI Source Device in Stand-alone Mode | 10 |
| Figure 2.2. Connecting with HDMI Sink Device in Stand-alone Mode | 10 |
| Figure 2.3. Connecting with MHL Source Device in Stand-alone Mode | 11 |
| Figure 2.4. Connecting with MHL Sink Device in Stand-alone Mode | 11 |
| Figure 2.5. Video Generator Window | 12 |
| Figure 2.6. Video Analyzer Window | 13 |
| Figure 2.7. Read EDID from Sink DUT Window | 14 |
| Figure 2.8. Load EDID to Sink TE Window | 15 |
| Figure 2.9. Factory Test Window | 16 |
| Figure 3.1. Inside the Software Package | 17 |
| Figure 3.2. Install the VCP Driver | 18 |
| Figure 3.3. Install the Dpinst Driver | 18 |
| Figure 3.4. The SL-881 AVG Shown in Device Manager | 18 |
| Figure 3.5. Locate and Open Setup.exe | 19 |
| Figure 3.6. Welcome to the AVG Setup Wizard | 19 |
| Figure 3.7. AVG Application Shortcut | 19 |
| Figure 3.8. AVG Software Main Window on Test Computer | 20 |
| Figure 3.9. Connect Device Dialog | 20 |
| Figure 3.10. No License File Found Dialog | 20 |
| Figure 3.11. License Manager Dialog | 21 |
| Figure 3.12. The Windows Save As Dialog | 21 |
| Figure 3.13. Send by Email Dialog | 21 |
| Figure 3.14. License Requirement File to Simplay Labs | 22 |
| Figure 3.15. License Menu Item Enabled | 23 |
| Figure 3.16. Options Enabled in AVG Software Main Window | 23 |
| Figure 4.1. EDDC (SCDC) Compliance Test Windows | 24 |
| Figure 4.2. CdfSource and CdfSink Dialogs | 25 |
| Figure 4.3. Instruction Dialogs | 25 |
| Figure 4.4. EDDC Source Test with Log File | 26 |
| Figure 4.5. EDDC Sink Test with Log File | 26 |
| Figure 4.6. HDR Palette Window | 27 |
| Figure 4.7. DDC Waveform Viewer | 28 |
| Figure 4.8. Sample DDC Waveform | 28 |
| Figure 4.9. Sample Test Report | 29 |
| Figure 4.10. Cable Loop-back Test Windows | 30 |
| Figure 4.11. Selected Items in Test List | 30 |
| Figure 4.12. Cable DUT Test Setup | 31 |
| Figure 4.13. Cable Loop Test in the Single Mode | 31 |
| Figure 4.14. Sample Test Report | 32 |
| Figure 4.15. Cable Loop Test in the Batch Mode | 33 |
| Figure 4.16. Cable Loop Test - Detailed Result Area | 33 |
| Figure 4.17. DDC Monitor Test Window | 34 |
| Figure 4.18. Input Port Monitor Instruction Dialog | 34 |
| Figure 4.19. Output Port Monitor Instruction Dialog | 35 |
| Figure 4.20. Pass Through Monitor Instruction Dialog | 35 |
| Figure 4.21. DDC Monitor Activities Window | 36 |
| Figure 4.22. DDC Log Filter | 37 |

| | |
|-----------------------------------------------------------------------------------------------|----|
| Figure 4.23. EDID Editor Test Window | 38 |
| Figure 4.24. EDID Review/Edit Window | 39 |
| Figure 4.25. EDID Program Done Dialog | 40 |
| Figure 4.26. Entering AVG_Console.exe Path | 40 |
| Figure 4.27. Running AV_Console.exe with Parameters | 41 |
| | |
| Figure A.1. SL-881 Firmware Installation Package | 44 |
| Figure A.2. SL-881 Firmware binary file | 44 |
| Figure A.3. System Settings Window Shown on the SL-881 LCD Touch Screen..... | 44 |
| Figure A.4. Image Update Window Shown on the SL-881 LCD Touch Screen | 45 |
| Figure A.5. Transceiver FW and RTL Updating Windows shown on the SL-881 LCD Touch Screen..... | 45 |
| Figure A.6. Image Update Completed Window Shown on the SL-881 LCD Touch Screen..... | 45 |
| Figure A.7. System Settings Window after Successful Firmware Updating | 46 |
| | |
| Figure B.1. Touch Screen Calibration Window Shown on the SL-881 LCD Touch Screen | 47 |
| Figure B.2. Click Circle on the Top Left Corner | 47 |
| Figure B.3. Click Circle on the Lower Right Corner | 47 |

1. Overview

The SL-881 6G Handheld HDMI/MHL Audio Video Generator (SL-881 AVG, SL-881, or AVG) is designed for testing source, sink, or repeater devices, and is compliant to the latest High Definition Multimedia Interface (HDMI®) 2.0a and Mobile High-Definition Link (MHL®) 3.x specifications.

This User Guide provides details on how to setup and test source, sink, or repeater devices for compliance to the HDMI version 2.0a and MHL 3.x specifications.

For the latest updates to documentation or software updates, see online at:

http://www.simplaylabs.com/support/product_support.aspx.

1.1. SL-881 Hardware

Figure 1.1, Figure 1.2, and Figure 1.3 show the top view, the front panel view, and the rear panel view of the SL-881 AVG chassis, respectively.



Figure 1.1. SL-881 AVG – Top View



Figure 1.2. SL-881 AVG – Front Panel



Figure 1.3. SL-881 AVG – Rear Panel

1.2. SL-881 Controls, Indicators, and Interface Connectors

Figure 1.4 shows the location of the SL-881 AVG enclosure features: input and output ports, power and reset switches, LCD touch screen display, and SD card slot.

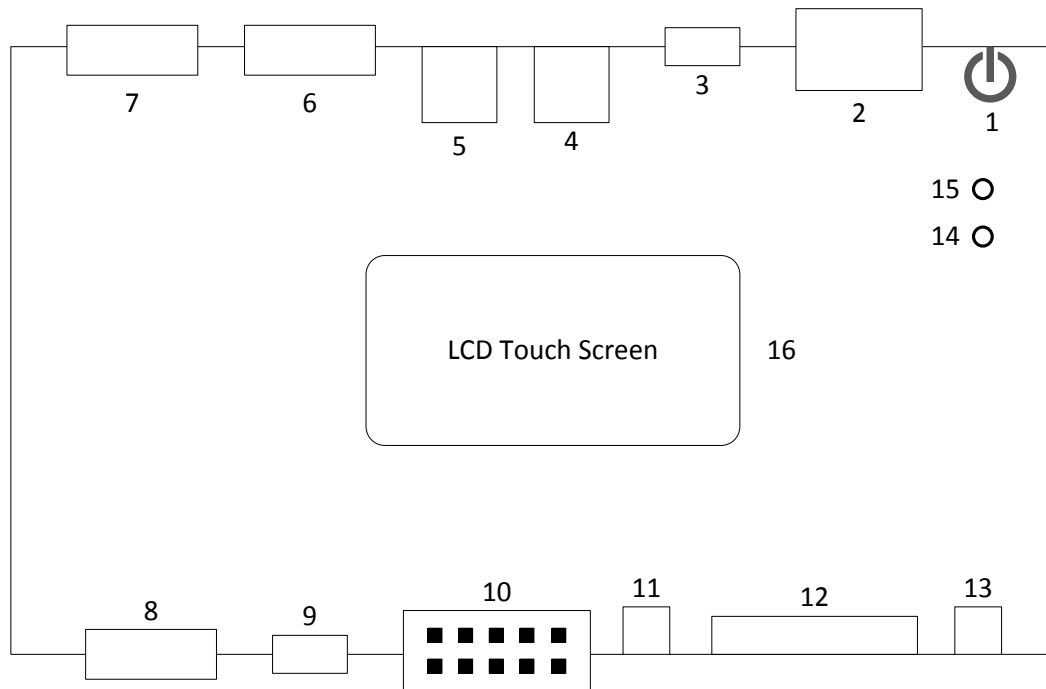


Figure 1.4. Locating SL-881 AVG Components – Top View

| Item | Label | Description |
|------|------------------|------------------------------------------------------------------------------------------------------------------------------------------------------|
| 1 | +5 V DC | DC power receptacle, 5 V 3 A. |
| 2 | Power Switch | Powers On/Off switch. |
| 3 | USB | USB mini-B port. Connects to test computer before running SCDC CTS test. |
| 4 | SPDIF OUT | SPDIF output port. |
| 5 | SPDIF IN | SPDIF input port. |
| 6 | HDMI OUT2 (3G) | HDMI 2.0a 3G signal generator port 2. |
| 7 | HDMI OUT1 (6G) | HDMI 2.0a 6G signal generator port 1. |
| 8 | HDMI INPUT | HDMI 2.0a signal receiver port. |
| 9 | MHL OUT | MHL signal output port. |
| 10 | I2C Monitor | Test connector for SCDC CTS test and DDC monitor function. |
| 11 | UPG | Push-button switch for firmware upgrade. |
| 12 | SD Card | SD card slot, only for updating firmware, and supplying audio and EDID contents from an up to 32 GB SD card. |
| 13 | Reset | Reset button |
| 14 | LED Charger | Battery charging indicator: when green, the SL-881 battery is charging. Turns off when the battery charge is complete. |
| 15 | LED Power | DC power indicator: when red, the power adapter is connected and the SL-881 is powered on. |
| 16 | LCD Touch Screen | Enables SL-881 operation in standard test mode. See Section 1.3.1.2 for a description of the touch screen icons and their functions. |

1.3. SL-881 Test Modes

The SL-881 AVG is designed to offer two distinct modes of operation:

- Standard Test Mode, see [Section 1.3.1](#).
- Enhanced Test Mode, adding to the standard mode functionality. See [Section 1.3.2](#).

1.3.1. Standard Test Mode

In its standard test configuration, the SL-881 offers audio and video test features to enable compliance testing to HDMI 2.0a and MHL 3.x specifications.

1.3.1.1. Available Standard Tests

The SL-881 AVG is ready for use in standard test mode immediately upon delivery. These are the operations that are available in standard test mode:

1. Analyze input signal using HDMI IN port
2. Generate output signal using HDMI OUT ports
3. Perform Factory timing test using HDMI OUT ports
4. Read EDID contents from devices connecting to HDMI OUT ports
5. Load EDID data to HDMI IN port

For details of the above operations, refer to [Section 2](#).

1.3.1.2. The SL-881 LCD Touch Screen in Standard Test Mode

Figure 1.5 shows the LCD touch screen of the SL-881 in standard test mode under default factory configuration.

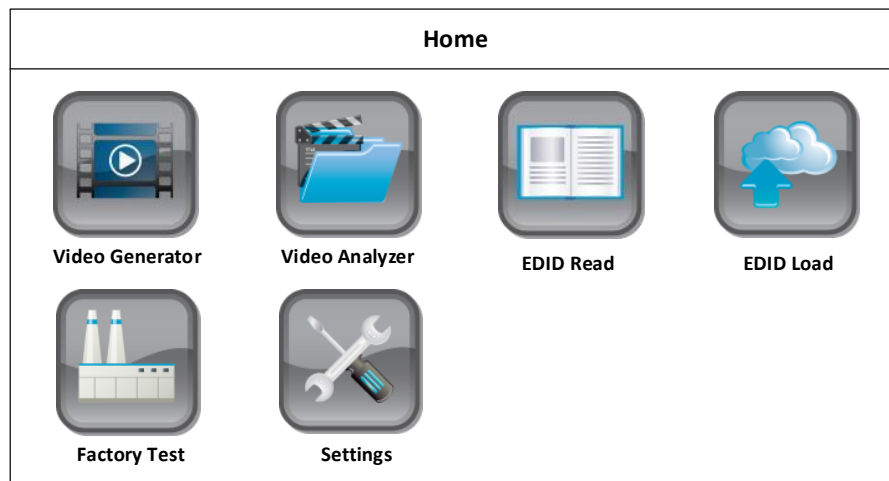


Figure 1.5. LCD Touch Screen Main Window

These are the standard operation features, accessible through the icons that are displayed on the LCD touch screen of the SL-881:

| Icon | Function | Section Reference |
|-----------------|------------------------------------------------------------------------------------------------------|-----------------------------|
| Video Generator | Controls HDMI OUT 1 and HDMI OUT 2 ports to send HDMI signal. | Section 2.2 |
| Video Analyzer | Analyzes HDMI input signal from HDMI IN port. | Section 2.3 |
| EDID Read | Reads EDID contents from device connected to HDMI OUT 1 (6G) or HDMI OUT 2 (3G) port. | Section 2.4 |
| EDID Load | Loads EDID data from SD card and program to HDMI INPUT port. | Section 2.5 |
| Factory Test | Runs batch testing for a device connected to HDMI OUT 1 or HDMI OUT 2 ports. | Section 2.6 |
| Settings | Displays AVG firmware-related information. LCD touch screen to list current settings and parameters. | — |

1.3.2. Enhanced Test Mode

Enhanced test mode features become available only when installing optional software to your test computer. [Section 3](#) gives details of the procedure for installing the software and registering the license that is required to run the expanded test features. [Section 4](#) gives details on the enhanced SL-881 AVG functionality.

1.3.2.1. Enhanced Test Functions

In addition to the full set of functions of the standard configuration, enhanced test functionality becomes available upon installation and licensing of the optional software. These enhanced functions become available:

1. Perform EDDC (SCDC) compliance test.
2. Perform cable loop-back test.
3. DDC monitoring
4. EDID file editing

For details of the above operations, see [Section 4](#).

1.3.3. Devices under Test

Standard and enhanced test operations are available for:

- Sink devices, or input port of repeater devices
- Source devices, or output port of repeater device

1.4. Inside the Box

The SL-881 AVG delivery includes the following items:

- 5 V power supply
- Prime pass HDMI cable
- USB A to USB mini-B cable
- MHL cable (HDMI to Mini-B USB)
- SD card. This card is required to transfer and program the EDID contents of the HDMI INPUT port, and also for firmware upgrading.
- Header cable, 10 pin, with daughter card. **IMPORTANT! Save this item, as it is required for operation in the enhanced SL-881 AVG test mode.**

2. The SL-881 in Standard Test Mode

In its standard test configuration, the SL-881 offers audio and video test features to enable compliance testing to HDMI 2.0a and MHL 3.x specifications.

For standard mode operation, no additional optional software installation is required.

These are the operations that are available in the standard test mode:

1. Generate output signal using HDMI OUT ports
2. Analyze input signal using HDMI IN port
3. Perform Factory timing test using HDMI OUT ports
4. Load EDID data to HDMI IN port
5. Read EDID contents from devices connecting to HDMI OUT ports

Notes: When in Standard test mode, testing with source device or the output port of repeater devices, you can perform actions 2 and 4 mentioned in [Section 2.3](#) and [Section 2.5](#).

When in Standard test mode, testing with sink device or the input port of repeater devices, you can perform actions 1, 3, and 5 mentioned in [Section 2.2](#), [Section 2.6](#), and [Section 2.4](#).

2.1. Setting up Connections

Connect the SL-881 to the source device or the output port of the repeater or sink device or the input port of the repeater device before performing any test.

- When testing with HDMI Source device or the output port of repeater device, connect the SL-881 to your source device in the way shown in [Figure 2.1](#).

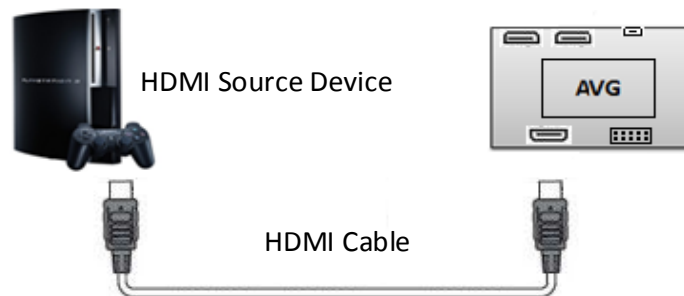


Figure 2.1. Connecting with HDMI Source Device in Stand-alone Mode

- When testing with HDMI Sink device or the input port of the repeater device, connect the SL-881 to your sink device in the way shown in [Figure 2.2](#).

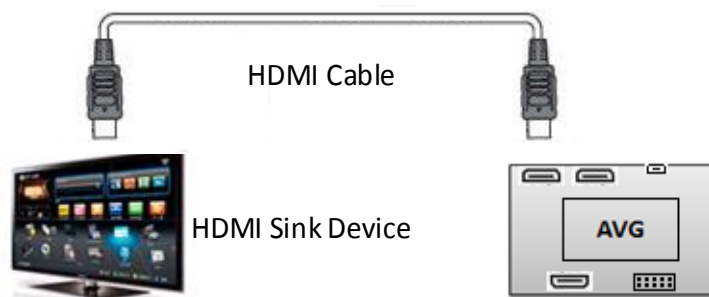


Figure 2.2. Connecting with HDMI Sink Device in Stand-alone Mode

- When testing with MHL Source device, connect the SL-881 to your MHL source device in the way shown in [Figure 2.3](#).

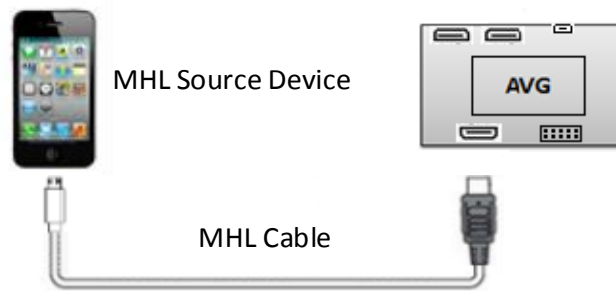


Figure 2.3. Connecting with MHL Source Device in Stand-alone Mode

- When testing with MHL Sink device, connect the SL-881 to your MHL sink device in the way shown in [Figure 2.4](#).



Figure 2.4. Connecting with MHL Sink Device in Stand-alone Mode

2.2. Generating Video Signals When Running with Sink Devices

The SL-881 can be used to generate multiple output signals to sink devices or the input port of repeater devices. You can modify parameters of the output signal at run time.

This procedure shows how to generate output signal when running with a sink device.

- Use the HDMI cable to connect the HDMI sink device to the SL-881 HDMI OUT 1 port, as shown in [Figure 2.2](#).
Or, use the MHL cable to connect the MHL sink device to the SL-881 MHL OUT port if you test an MHL sink device, as shown in [Figure 2.4](#).
- Power on the SL-881.
- On the LCD touch screen ([Figure 1.5](#)), choose Video Generator. The Video Generator window appears ([Figure 2.5](#)).

Video Generator

Resolution
—
480P

Signal Type
—
Auto

Color Space
—
RGB

Audio Source
—
Internal I2S

Video Pattern
—
Color Bars

HDCP
—
Auto

Color Depth
—
8-bit

HDR
—
Off

EDID Header Check: Fail
HDCP FAIL
EDID HDR Support: No

1.4b Default

2.0 Default

Figure 2.5. Video Generator Window

| Field | Function |
|---------------|---------------------------------------------------------------------|
| Resolution | Change output video timings, from 480p to 4k |
| Video Pattern | Change output video patterns, up to 30 video patterns are supported |
| Signal Type | Change output mode HDMI/DVI |
| HDCP | Change output HDCP revision, HDCP 2.x / 1.x / Off |
| Color Space | Change output color spaces, RGB/YC444/YC422/YC420 |
| Color Depth | Change output color depth, 8/10/12 bits per pixel per channel |
| Audio Source | Change output audio formats |
| HDR | Change output HDR formats enable/disable |

You can choose the parameter you want to change from the Video Generator window, such as Resolution. Change the parameter. The output signal will be changed accordingly.

2.3. Analyzing Input Signal When Running with Source Devices

The SL-881 can be used to analyze input signal from source devices or from output port of repeater devices, including video timing, video format, audio format, and HDR infoFrame information.

The following procedure shows how to analyze the video timing for input signal when running with source devices.

1. Use the HDMI cable to connect HDMI source device to the SL-881 HDMI IN port, as shown in [Figure 2.1](#).
Or, use the MHL cable to connect MHL source device to the SL-881 HDMI IN port when you test an MHL source device, as shown in [Figure 2.3](#).
2. Power on the SL-881.
3. On the LCD touch screen ([Figure 1.5](#)), choose Video Analyzer. The Video Analyzer window appears ([Figure 2.6](#)).

| Video Analyzer | | | |
|----------------|----------------------|--------------|----------------------|
| Pixel Freq | <input type="text"/> | I / P | <input type="text"/> |
| Hpol | <input type="text"/> | Vpol | <input type="text"/> |
| Htotal | <input type="text"/> | Vtotal | <input type="text"/> |
| Hactive | <input type="text"/> | Vactive | <input type="text"/> |
| Hsync | <input type="text"/> | Vsync | <input type="text"/> |
| Hfront | <input type="text"/> | Vfront | <input type="text"/> |
| | | N/A | |
| | | HDMI | |
| | | N/A | |
| Video Timing | Video Format | Audio Format | HDR Info |

Figure 2.6. Video Analyzer Window

| Field | Function |
|------------|-----------------------------------------------|
| Pixel Freq | detected pixel frequency (Hz) |
| I/P | detected Interlaced/Progressive mode |
| Hpol | detected timing Hsync polarities |
| Vpol | detected timing Vsync polarities |
| Htotal | detected timing Horizontal total pixel count |
| Vtotal | detected timing Vertical total pixel count |
| Hactive | detected timing Horizontal active pixel count |
| Vactive | detected timing Vertical active pixel count |
| Hsync | detected timing Hsync width (in pixels) |
| Vsync | detected timing Hsync width (in lines) |
| Hfront | detected timing Hsync front pixels |
| Vfront | detected timing Vsync front lines |

2.4. Reading EDID Contents from HDMI OUT Ports

The SL-881 can be used to read EDID contents from a sink device or the input port of repeater device. The 256-byte raw data, which is in Hex mode, of EDID contents from a sink device or input port of a repeater device can be read out and displayed in the LCD touch screen of the SL-881 in this test.

This procedure shows how to read EDID contents from the HDMI OUT ports.

1. Use the HDMI cable to connect the sink device to the SL-881 HDMI OUT 1 port, as shown in [Figure 2.2](#).
2. Power on the SL-881.
3. On the LCD touch screen ([Figure 1.5](#)), choose EDID Read. The Read EDID from Sink DUT window appears ([Figure 2.7](#)).

Read EDID from Sink DUT (From HDMI OUT1)

Block 0

Block 1

| | 00 | 01 | 02 | 03 | 04 | 05 | 06 | 07 | 08 | 09 | 0A | 0B | 0C | 0D | 0E | 0F |
|----|----|----|----|----|----|----|----|----|----|----|----|----|----|----|----|----|
| 00 | 00 | 00 | 00 | 00 | 00 | 00 | 00 | 00 | 00 | 00 | 00 | 00 | 00 | 00 | 00 | 00 |
| 01 | 00 | 00 | 00 | 00 | 00 | 00 | 00 | 00 | 00 | 00 | 00 | 00 | 00 | 00 | 00 | 00 |
| 02 | 00 | 00 | 00 | 00 | 00 | 00 | 00 | 00 | 00 | 00 | 00 | 00 | 00 | 00 | 00 | 00 |
| 03 | 00 | 00 | 00 | 00 | 00 | 00 | 00 | 00 | 00 | 00 | 00 | 00 | 00 | 00 | 00 | 00 |
| 04 | 00 | 00 | 00 | 00 | 00 | 00 | 00 | 00 | 00 | 00 | 00 | 00 | 00 | 00 | 00 | 00 |
| 05 | 00 | 00 | 00 | 00 | 00 | 00 | 00 | 00 | 00 | 00 | 00 | 00 | 00 | 00 | 00 | 00 |
| 06 | 00 | 00 | 00 | 00 | 00 | 00 | 00 | 00 | 00 | 00 | 00 | 00 | 00 | 00 | 00 | 00 |
| 07 | 00 | 00 | 00 | 00 | 00 | 00 | 00 | 00 | 00 | 00 | 00 | 00 | 00 | 00 | 00 | 00 |

Refresh

Write

Save

Figure 2.7. Read EDID from Sink DUT Window

You can use the Block 0 or Block 1 tab to select which part of EDID contents to display. Use the Refresh button to read EDID contents from the HDMI OUT 1 port. Use the Write button to program current EDID content to AVG HDMI IN port. Use the Save button to save current EDID content to SD card.

2.5. Loading EDID Data to the HDMI IN Port

The EDID contents of HDMI input port of the SL-881 can be updated using SD card. Use the EDID Load icon of the SL-881 LCD touch screen (Figure 1.5) to load the updated EDID file from the SD card.

Note: When you want to update the EDID content of the HDMI input of the SL-881, copy your own EDID data, 256-byte binary file in *.bin format to the SD card.

This procedure shows how to load EDID data from the SD card to the HDMI IN port of the SL-881.

1. Power on the SL-881.
2. Plug the SD card into the SD Card slot.
3. On the LCD touch screen (Figure 1.5), choose EDID Load. The Load EDID to Sink TE window appears. See Figure 2.8.

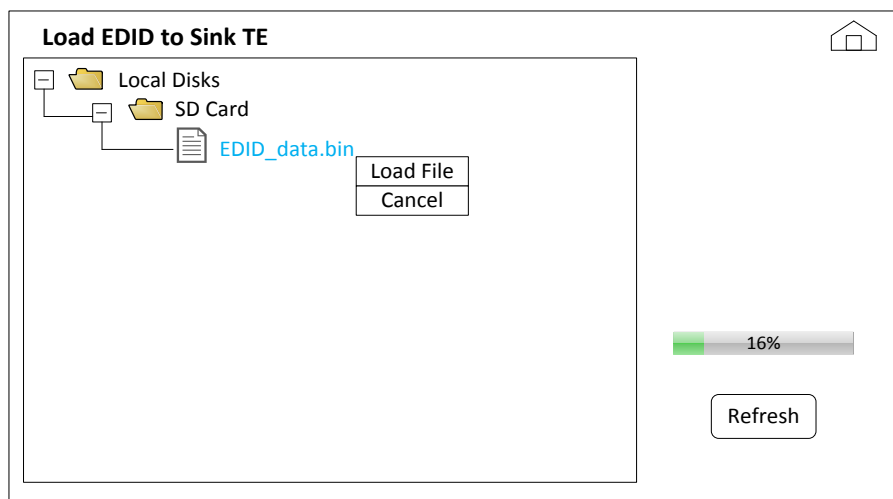


Figure 2.8. Load EDID to Sink TE Window

4. Select the EDID file (EDID_data.bin) to load.
5. Select Load File or Cancel from the pop-up menu that is not visible on screen. If you click Load File, the selected EDID file will be loaded into HDMI IN port of the SL-881. If you do not want to load the selected EDID file, click Cancel.
6. Use the HDMI cable to connect source device to the SL-881 HDMI IN port, as shown in Figure 2.1. Now the source device is tested with the new loaded EDID content.

Note: When the pop-up menu appears, you cannot go back to the main window until you click Load File or Cancel. Use the Home icon on the upper right corner to go back to the main window.

2.6. Performing Factory Test When Running with Sink Devices

The SL-881 can be used to perform video output batch testing, using the Factory Test icon of the SL-881 LCD touch screen. You can perform a quick check for input signal rendering capability of your Sink device or input port of the repeater device.

This procedure shows how to perform factory test when running with sink devices.

1. Use the HDMI cable to connect sink device to the SL-881 HDMI OUT 1 port, as shown in [Figure 2.2](#).
2. Power on the SL-881 .
3. On the LCD touch screen ([Figure 1.5](#)), choose Factory Test. The Factory Test window appears ([Figure 2.9](#)).



Figure 2.9. Factory Test Window

Use the Up and Down arrows (green buttons in [Figure 2.9](#)) to switch among output signals to perform factory test. HDCP compliance information is displayed in the text output field.

3. Optional SL-881 AVG Software

You must have purchased the SL-881 AVG software (p/n SL-881-SWUPG) from your distributor or Simplay Labs before you can complete the installation steps outlined below and obtain the license key to activate the features (SCDC, DDC, and EDID Editor)

This section provides details on downloading and installing the optional SL-881 AVG software to your test computer.

Note: Upon installation and licensing, control of the optional features resides with the application installed on your test computer.

Overall, the optional SL-881 AVG software installation and licensing requires these procedures:

1. Download the optional software from the website to your test computer.
2. Install the software driver and the software. We recommend you installing the driver first.
3. Purchase and activate the software license. The license must be purchased.

3.1. Downloading the SL-881 AVG Software

The optional SL-881 AVG software can be downloaded from the Simplay website to your test computer. To download the software, see the Simplay Labs site, at: http://www.simplaylabs.com/support/product_support.aspx.

3.1.1. Contents of the Software Package

Download the software package. Save*.zip to your test computer. Unzip the file. Two subfolders are found in the unzipped folder (Figure 3.1): the SL881_AVG_driver_installation folder and the SL881_AVG_software_installation folder.

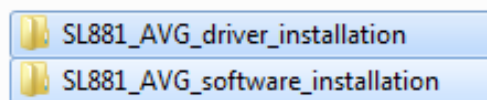


Figure 3.1. Inside the Software Package

- The SL881_AVG_driver_installation folder contains driver installation files. Refer to Section 3.3 below for more details.
- The SL881_AVG_software_installation folder contains software installation files. Refer to Section 3.4 below for more details.

3.2. System Requirements

Before installing the software, you need to confirm the system environment of your test computer.

- A PC or laptop computer with Microsoft Windows 7 or Windows 8, 32 bit or 64 bit Operating System.
- Minimum 4 GB, optimum 8 GB RAM.
- 500 GB hard drive.

3.3. Installing the SL-881 AVG Driver

You will need to install two drivers: first, the VCP (Virtual COM Port) driver, and then install the dpinst driver.

Follow steps below to install the VCP driver and dpinst driver.

1. Plug in the mini-USB cable (item 3 in [Figure 1.4](#)) and power on the SL-881. Open the SL881_AVG_driver_installation folder from your test computer. Click VCP_V1.4.0_Setup to install VCP driver (as shown in [Figure 3.2](#))

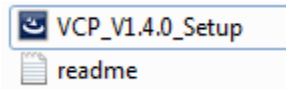


Figure 3.2. Install the VCP Driver

2. After the VCP driver installation is completed, open readme.txt ([Figure 3.2](#)). Follow the steps in the “How to use” section in readme.txt to install the dpinst driver.

Based on your Operating System: if you have 64-bit Windows, run dpinst_amd64.exe; if you have 32-bit Windows, run dpinst_x86.exe ([Figure 3.3](#)).

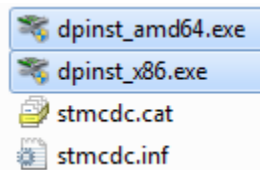


Figure 3.3. Install the Dpinst Driver

3. If the dpinst driver is installed correctly, you can see the SL-881 is recognized by the Device Manager (as shown in [Figure 3.4](#)).

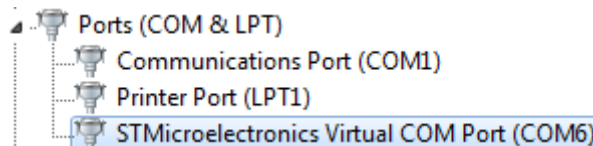


Figure 3.4. The SL-881 AVG Shown in Device Manager

3.4. Installing the SL-881 AVG Software

After installing the software driver, you need to install the software. Follow these steps to install the SL-881 AVG software.

1. Open the SL881_AVG_software_installation folder from your test computer. Click setup.exe (as shown in [Figure 3.5](#)) to install the SL-881 AVG software.

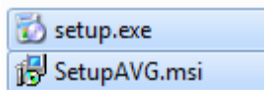


Figure 3.5. Locate and Open Setup.exe

2. The Welcome to the Simplay AVG Setup Wizard dialog opens (as shown in [Figure 3.6](#)). Click Next.

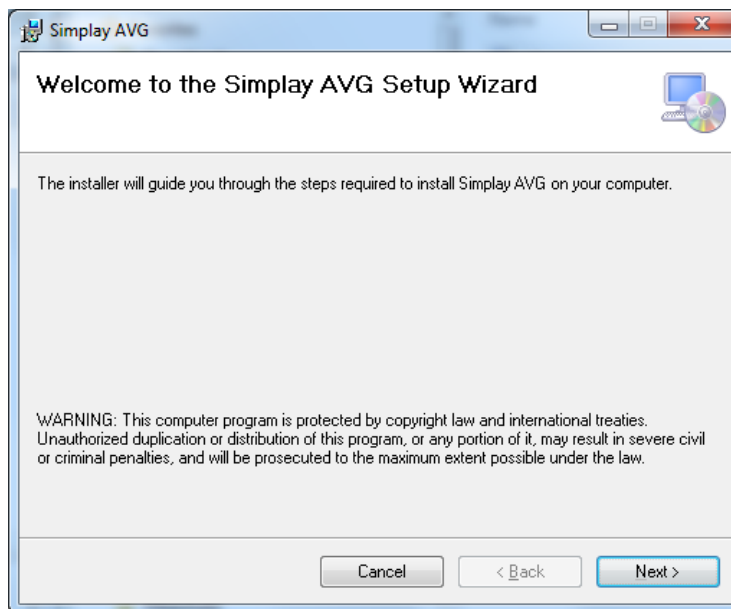


Figure 3.6. Welcome to the AVG Setup Wizard

3. When the SL-881 AVG software installation is completed, the AVG application shortcut is created on your desktop (as shown in [Figure 3.7](#)).



Figure 3.7. AVG Application Shortcut

3.5. Licensing

If you install the SL-881 AVG software for the first time, you need to set up the connection between the SL-881 and test computer, and then get an AVG software license.

If you already have the AVG software license, you can set up the connection between the SL-881 and test computer, and use the AVG software directly.

3.5.1. Getting License File

You need to get and load the license file to activate the software.

If you install the AVG software for the first time, follow these steps to get an AVG software license.

1. Make sure the SL-881 is powered on and is connected to your test computer. Open the SL-881 Application shortcut from your test computer desktop (Figure 3.7). You get the main window of the AVG software (Figure 3.8).

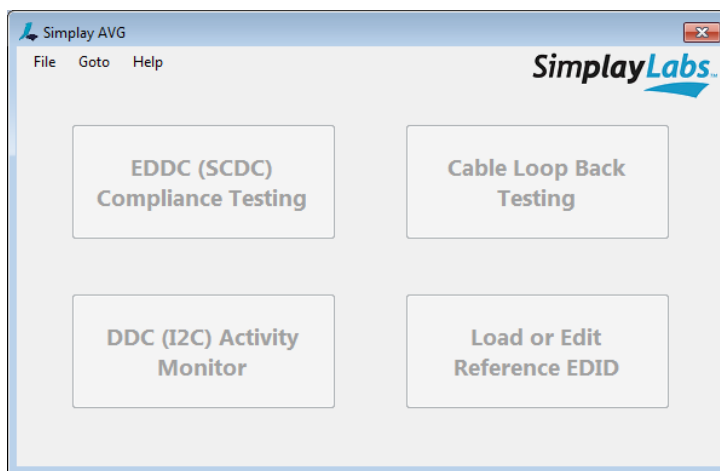


Figure 3.8. AVG Software Main Window on Test Computer

2. Select File → Open Device → Connect Device.
3. From the drop-down menu of this dialog, select the COM port shown in the Device Manager (Figure 3.9).

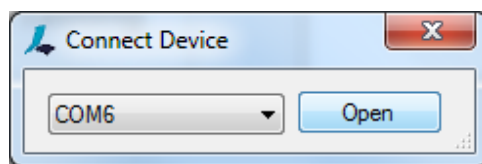


Figure 3.9. Connect Device Dialog

4. Click Open.
5. A dialog pops up as shown in Figure 3.10. Click OK.

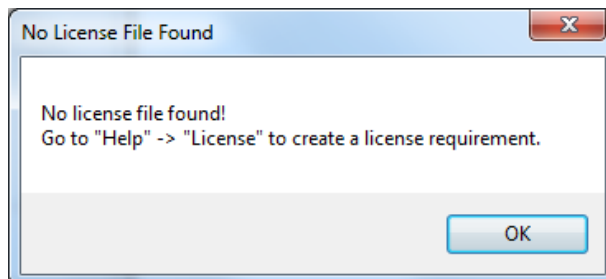


Figure 3.10. No License File Found Dialog

6. From the AVG software main window (Figure 3.8), choose Help → License. The License Manager dialog appears (Figure 3.11).

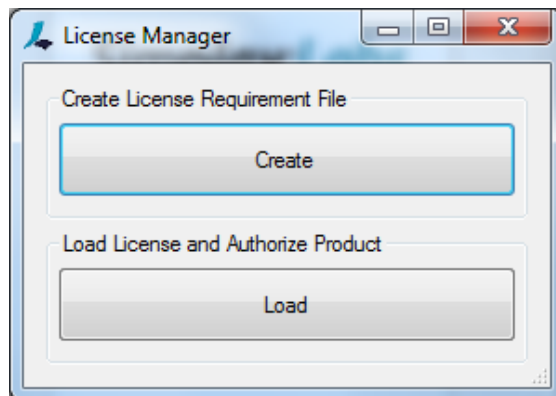


Figure 3.11. License Manager Dialog

7. Click Create to generate a license requirement file (*.avg).
8. The Windows Save as dialog pops up (Figure 3.12). Save this license requirement file to your test computer.

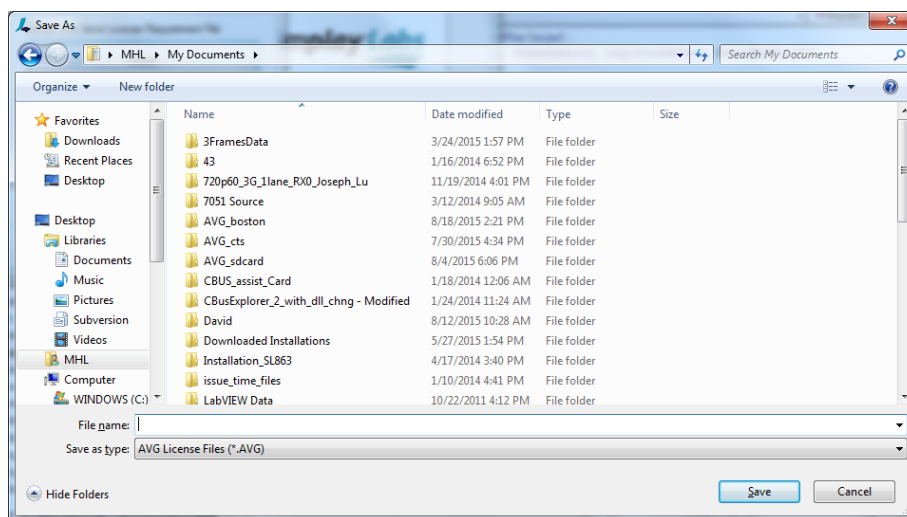


Figure 3.12. The Windows Save As Dialog

9. The Send License Requirement File dialog pops up (Figure 3.13).

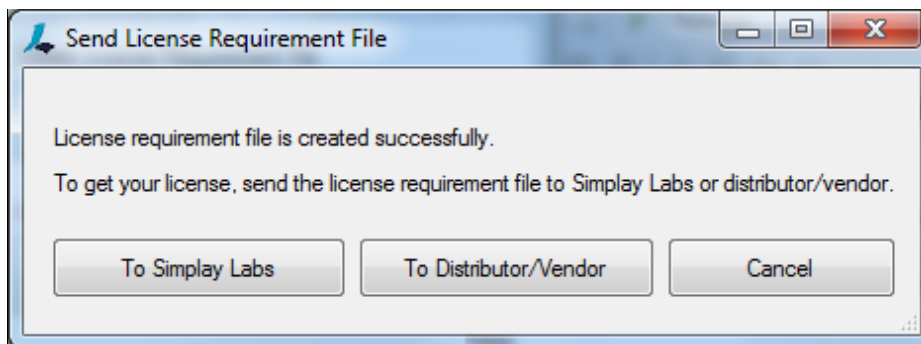


Figure 3.13. Send by Email Dialog

- [illegible]

If you purchased your SL-881 from a distributor/vendor, click To Distributor/Vendor. The Windows explorer pops up, pointing you to the license requirement file you previously saved. Then Microsoft Outlook window pops up. Manually attach the license requirement file (*.avg) which you previously saved to the email. Fill in your distributor/vendor's email address. Send the email to your distributor/vendor. The distributor/vendor will forward this request to Simplay Labs and purchase the license key on your behalf. The distributor/vendor will send the license file back to you.

After getting a license file (*.lic), you need to load the license file to activate the software and yet to access enhanced test functionality of the SL-881.

1. Save the license file to your test computer.
2. Make sure your test computer is connected to the SL-881.
3. Go back to the AVG software main window ([Figure 3.8](#)). Select File → Open Device → Connect Device.
4. From the drop-down menu of this dialog ([Figure 3.9](#)), select the COM port shown in the Device Manager.
5. Click Open.

6. No License File Found dialog pops up as shown in [Figure 3.10](#). Click OK. After that, the Help → License menu item is enabled ([Figure 3.15](#)).

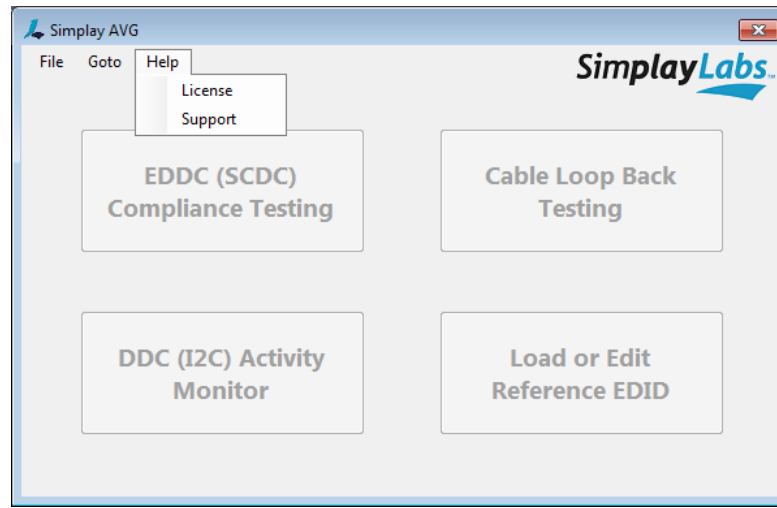


Figure 3.15. License Menu Item Enabled

7. Choose Help → License.
8. The License Manager dialog appears ([Figure 3.11](#)). Click Load to load the license file (*.lic).
9. After loading the license file, from the AVG software main window, the EDDC (SCDC) Compliance Testing, the DDC (I2C) Activity Monitor, and the Load or Edit Reference EDID options are enabled, as shown in [Figure 3.16](#). The connection between the SL-881 and your test computer is completed. You can start using the SL-881 AVG software.

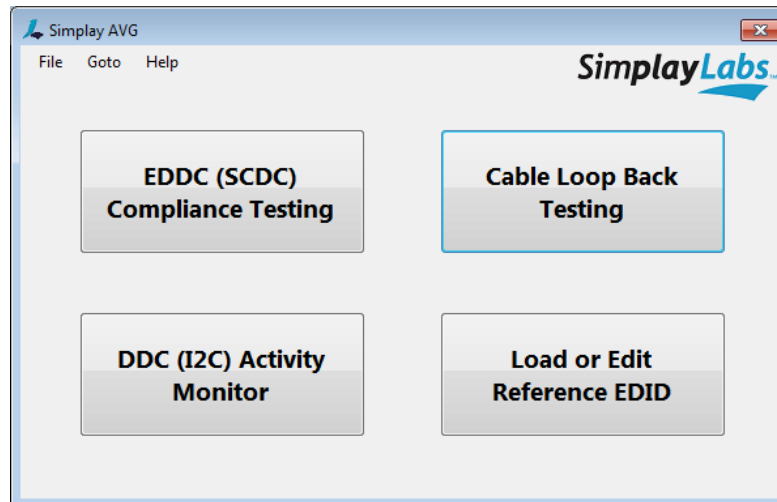


Figure 3.16. Options Enabled in AVG Software Main Window

Note: The Help → Support menu item ([Figure 3.15](#)) points you to the Simplay Labs website for technical support information.

4. Enhanced SL-881 AVG Test Mode

After you purchased SL-881 software and install the software to the test computer, you can access those enhanced functionality of the SL-881 via your test computer, including performing EDDC (SCDC) compliance test, running Cable Loop-back test, monitoring DDC, and Editing EDID files, i.e. in its enhanced test mode. In this enhanced test based mode, use the SL-881, 5 V power, mini-USB cable, and HDMI cable to run those optional features.

You can also control SL-881 with a console application of Windows to build SL-881 in your own automation test.

Note: In this enhanced test mode, the LCD touch screen of the SL-881 is not operational. Most of the operation is performed on your test computer, unless there is message pop up prompting you to check the connections between the devices and the SL-881.

4.1. Performing EDDC Compliance Test

1. From the AVG software main window of your test computer (Figure 3.16), click EDDC (SCDC) Compliance Testing. The EDDC Compliance Test window appears (Figure 4.1).
2. From the EDDC Compliance Test window, select the Source DUT or Sink DUT radio button.

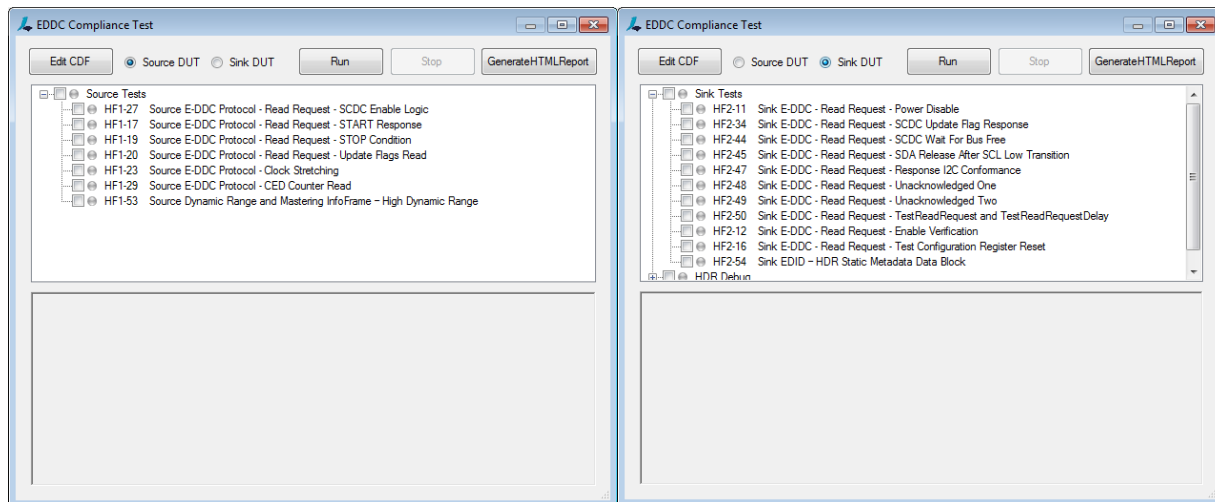


Figure 4.1. EDDC (SCDC) Compliance Test Windows

3. Click the Edit CDF button. CdfSource or CdfSink dialog pops up (Figure 4.2). You can customize the information to your need in the dialog.

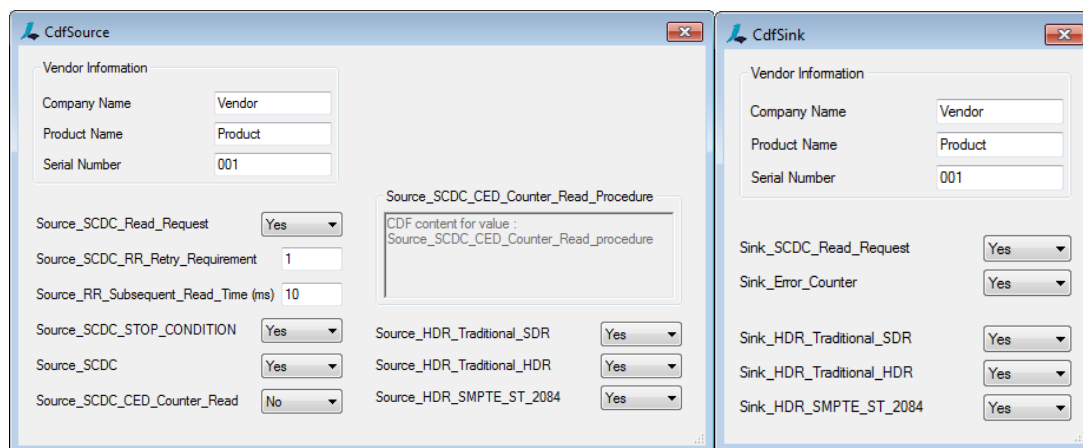


Figure 4.2. CdfSource and CdfSink Dialogs

4. After editing CDF variables, choose the items from the Source Tests area or the Sink Tests area (Figure 4.1). Click Run to run the selected items.
5. A dialog pops up (Figure 4.3) asking you to connect the source or sink device to the test computer. After the connections are set up, click OK.

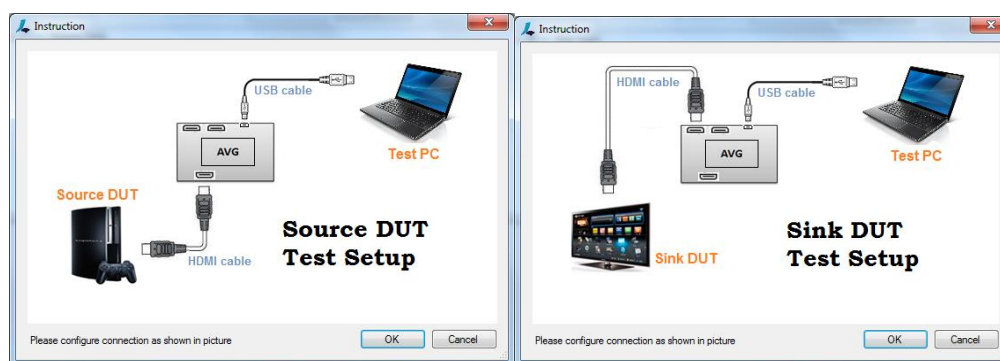


Figure 4.3. Instruction Dialogs

6. The selected tests run as shown below (Figure 4.4 and Figure 4.5).

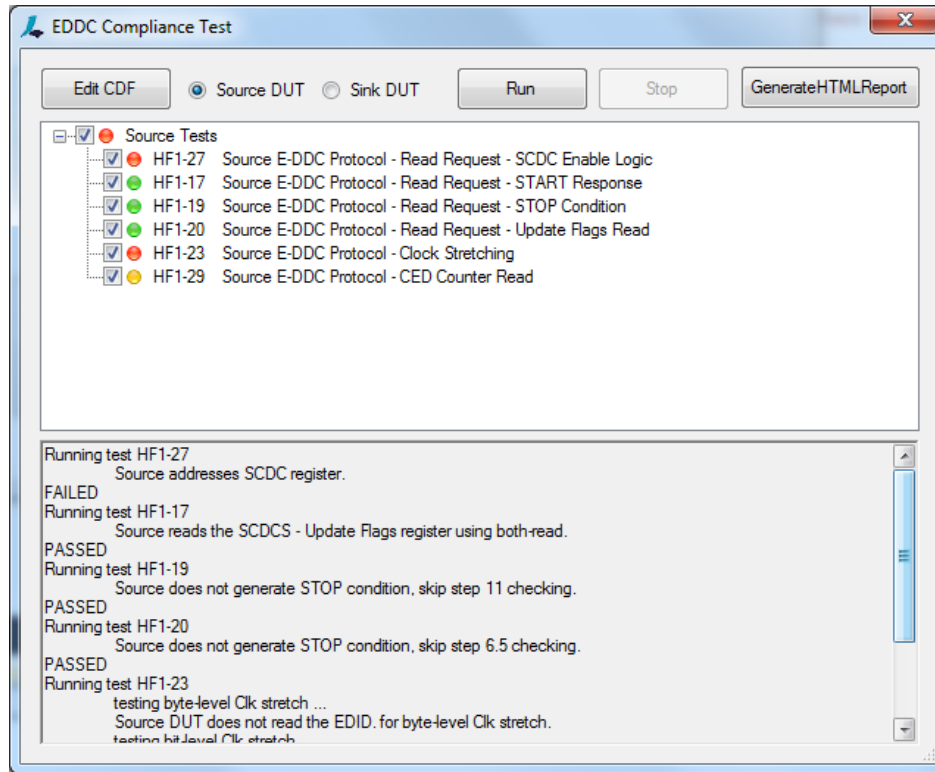


Figure 4.4. EDDC Source Test with Log File

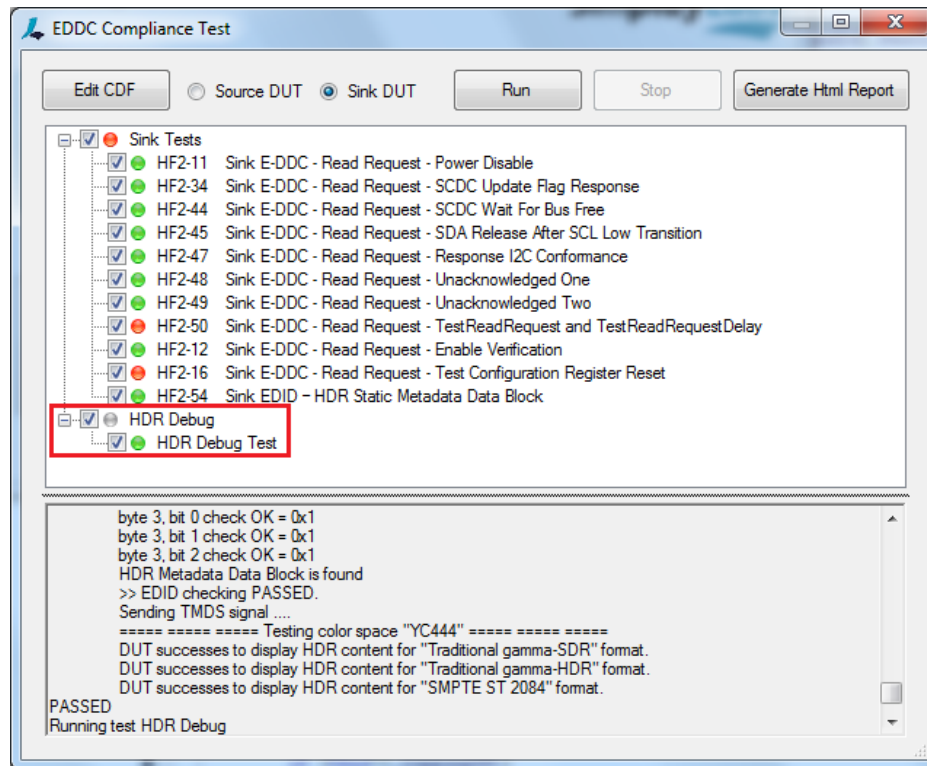


Figure 4.5. EDDC Sink Test with Log File

7. This step is Sink-Test-specific.

HDR Debug Test is one of the selected tests in the Sink Tests. When HDR Debug Test in Sink Tests is running, HDR Palette window pops up (Figure 4.6).

HDR Debug Test is available only in the Sink Tests of the EDDC Compliance Test. This HDR Debug Test feature is available since SL-881 AVG software version 1.16 and hardware version 2.10015008. To download the software, refer to [Downloading the SL-881 AVG Software](#).

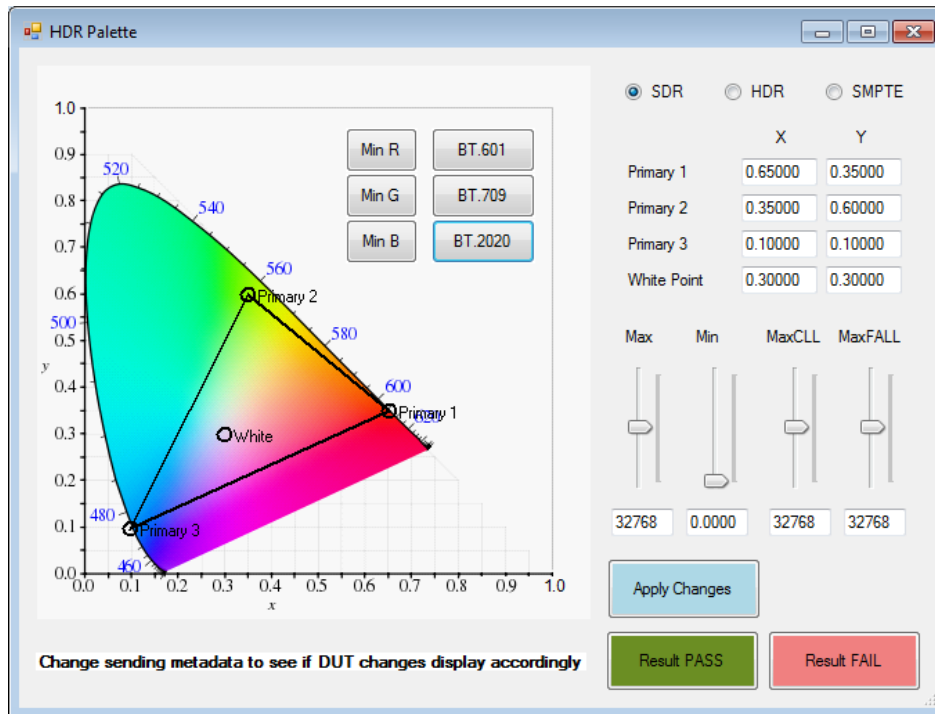


Figure 4.6. HDR Palette Window

- Use SDR, HDR, or SMPTE radio button to select HDR infoFrame type.
- Use Min R, Min G, and Min B buttons to set Primary points to reflect minimum Red, Green, and Blue colormetry.
- Use BT.601, BT.709, and BT.2020 buttons to set Primary points to reflect BT.601, BT.709, and BT.2020 colormetry.
- Fill in Primary 1, Primary 2, Primary 3, and White Point fields to set Primary and White points with arbitrary values. The primary range is from 0 to 1.0.
- Drag the circle points in the coordinate axis to set Primary and White points with arbitrary values.
- Use slider bar Max, Min, MaxCLL, and MaxFALL to adjust luma parameters for HDR infoFrame.
- Use Apply Changes button to control AVG platform to send new HDR infoFrame based on current selections.
- Click Press Result PASS or Result FAIL button to end the test. Select which button that depends on customers' expection of the sink device in this test.

8. After all the selected tests, for either Source Test or Sink Test in the EDDC compliance test, are completed, right click on the test case. Click “View DDC Waveform” to get a detailed DDC log (Figure 4.7).

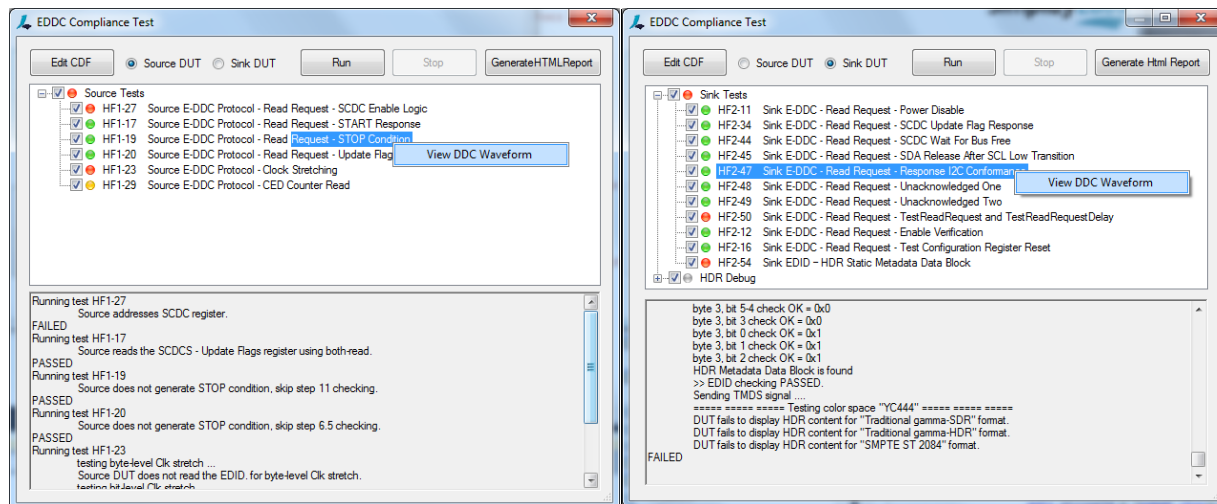


Figure 4.7. DDC Waveform Viewer

9. Following is a sample DDC Waveform (Figure 4.8).

Note: DDC Waveform viewer feature is available since SL-881 AVG software version 1.16 and hardware version 2.10015008. To download the software, refer to [Downloading the SL-881 AVG Software](#).

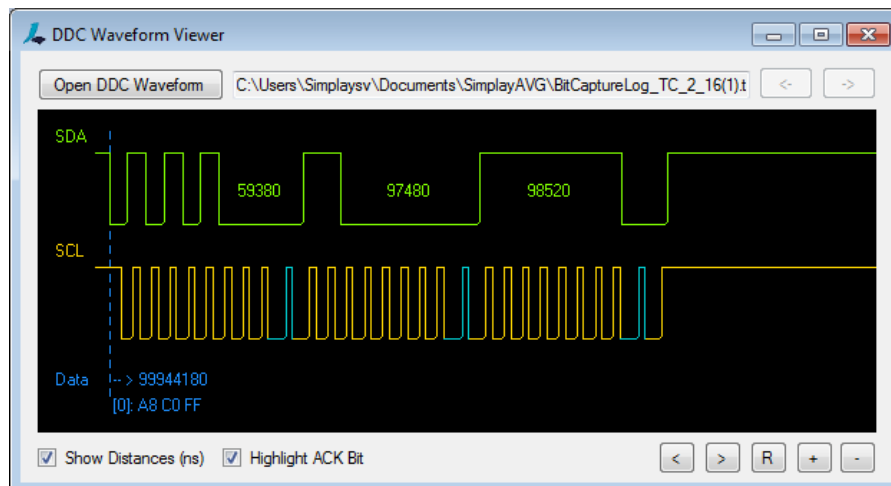


Figure 4.8. Sample DDC Waveform

- Use Open DDC Waveform button to load desired DDC waveform file.
 - Use “<” and “>” buttons to view previous and next DDC waveform file.
 - Use “R” button to reset waveform displaying.
 - Use “<” and “>” buttons to navigate to previous and next DDC transaction.
 - Use “+” and “-” buttons to zoom in and zoom out waveform displaying.
10. When the EDDC compliance test completes, you can get a report file in HTML format by clicking the Report button (Figure 4.1). Following is a sample report (Figure 4.9).

Simplay Labs

Simplay SL881 AVG

Test Information

| | |
|-------------|-----------------------------------------------------------------------------------------|
| Simplay AVG | SW Version : 1.16 FW Version : 2.10 HW Version : 8 (2016-6-23) CTS Version : 8 |
|-------------|-----------------------------------------------------------------------------------------|

| | | |
|-----------------|-----------------------------------------------------------------------|---------------------------------------------------------------------------------------------------------------------------------------------------------------------------------------------------------------------------------------------------------------------------------------------------------------------------|
| CDF Information | Company Name = Vendor Product Name = Product Serial Number= 001 | Source_SCDC_Read_Request = Yes Source_SCDC_RR_Retry_Requirement = 1 Source_RR_Subsequent_Read_Time = 10 Source_SCDC_STOP_CONDITION = Yes Source_SCDC = Yes Source_SCDC_CED_Counter_Read = No Source_SCDC_CED_Counter_Read_Procedure = CDF content for value : Source_SCDC_CED_Counter_Read_procedure |
|-----------------|-----------------------------------------------------------------------|---------------------------------------------------------------------------------------------------------------------------------------------------------------------------------------------------------------------------------------------------------------------------------------------------------------------------|

Result Summary

Total : 6 Pass : 4 Fail : 2 Finish Time : 9/6/2016 3:52:28 PM

| | |
|--------------------------------------------------------------------------|-----------|
| HF1-27 Source E-DDC Protocol - Read Request - SCDC Enable Logic | PASSED |
| HF1-17 Source E-DDC Protocol - Read Request - START Response | PASSED |
| HF1-19 Source E-DDC Protocol - Read Request - STOP Condition | PASSED |
| HF1-20 Source E-DDC Protocol - Read Request - Update Flags Read | PASSED |
| HF1-23 Source E-DDC Protocol - Clock Stretching | FAILED |
| HF1-29 Source E-DDC Protocol - CED Counter Read | PASS_SKIP |
| HF1-53 Source Dynamic Range and Mastering InfoFrame - High Dynamic Range | FAILED |

Test Log

```
> ----- Start Time : 9/6/2016 3:47:28 PM -----
> Running test HF1-27
> Toggle HPD ...
> Source does not address SCDC register when RR Capable is set to 0.
> Toggle HPD 2nd time ...
> Source DUT reads the EDID out.
> Source DUT does not write RR_Enable bit.
> Toggle HPD 3rd time ...
> Source DUT reads the EDID.
> Source DUT writes RR_Enable bit.
> Source DUT does not write RR_Enable bit before reading EDID data
```

Figure 4.9. Sample Test Report

4.2. Running Cable Loop-back Test

From the AVG software main window of your test computer (Figure 3.16), click Cable Loop-back Testing. The Cable Loop-back Test window appears (Figure 4.10).

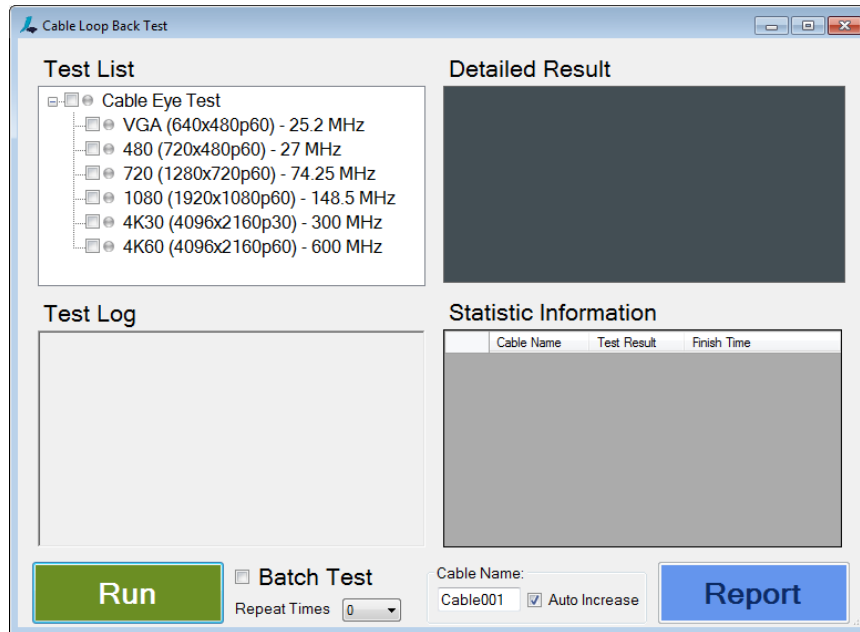


Figure 4.10. Cable Loop-back Test Windows

There are two modes of Cable Loop-back test, single mode and batch mode.

4.2.1. Single mode

If you want to run the test in single mode, be sure NOT to check the Batch Test checkbox (bottom area in Figure 4.10).

1. Select one or multiple items in the Test List area (Figure 4.11).

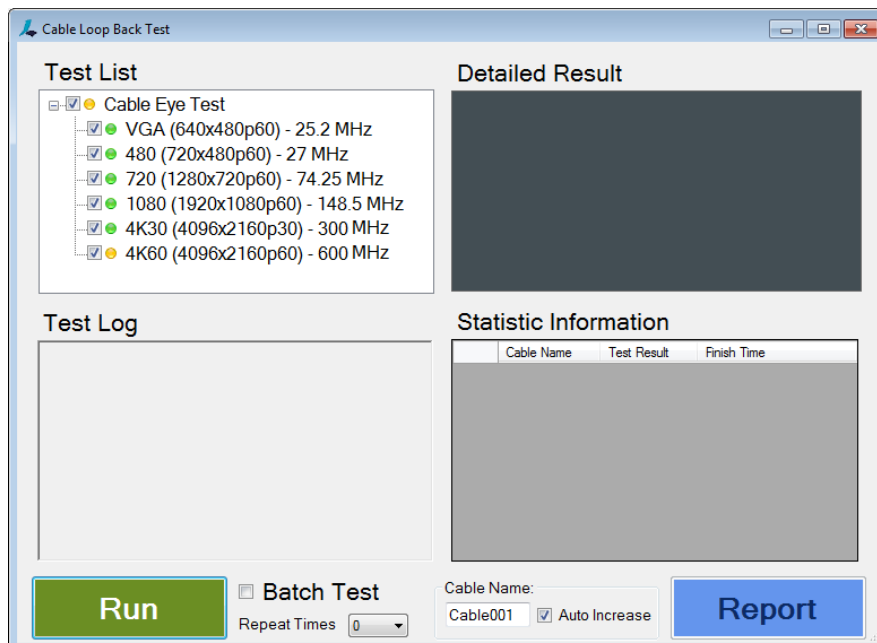


Figure 4.11. Selected Items in Test List

2. Select how many times to repeat the test from the Repeat Times area.
3. When Auto Increase checkbox is checked, Cable Name will be changed to Cable002 and increase after each complete test run.
If the Auto Increase checkbox is not checked, Cable Name remains the same after each test.
4. Click Run to run the items selected in Step 1.
5. A dialog pops up (Figure 4.12) asking you to connect the cable device to the AVG platform. After the connections are set up, click OK.

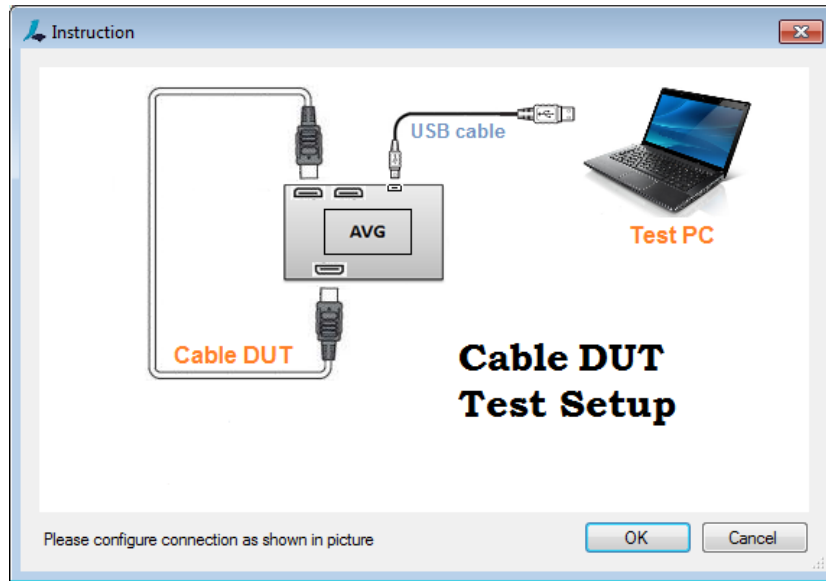


Figure 4.12. Cable DUT Test Setup

6. Start running test for the selected items, as shown in Figure 4.13.

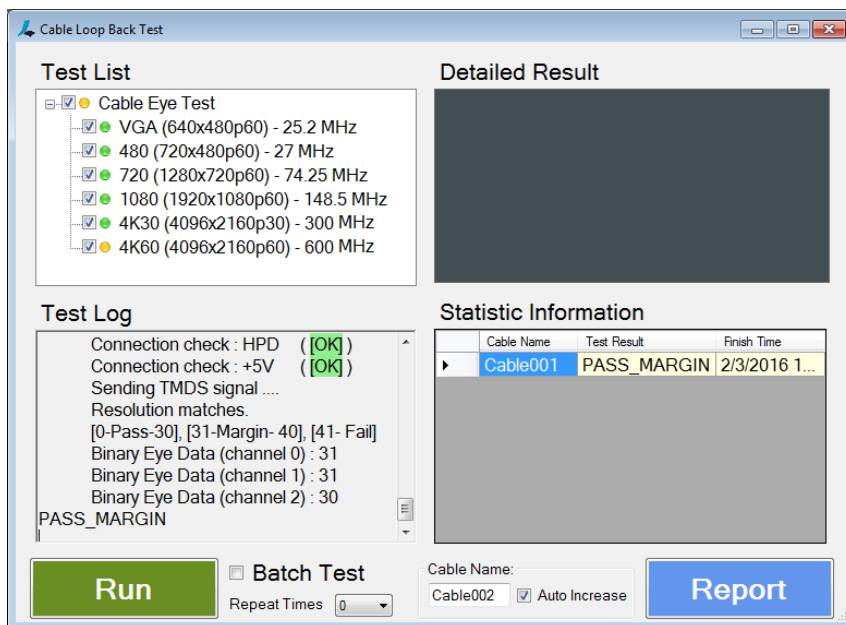


Figure 4.13. Cable Loop Test in the Single Mode

- When the Cable Loop-back test completes, you can get a formatted report file by clicking the Report button (Figure 4.10). Following is a sample report (Figure 4.14).

Simplay Labs

Simplay SL881 AVG

Test Information

| | |
|-------------|----------------------------------------------------------------------------------------------------|
| Simplay AVG | SW Version : 1.16 FW Version : 2.10 HW Version : 8 (2016-6-23) CTS Version : 2015-October |
|-------------|----------------------------------------------------------------------------------------------------|

Result Summary

Total : 1 Finish Time : 9/6/2016 3:40:02 PM

| Cable Name | VGA (640x480p60) | 480 (720x480p60) | 720 (1280x720p60) | 1080 (1920x1080p60) | 4K30 (4096x2160p30) | 4K60 (4096x2160p60) | Results |
|------------|------------------|------------------|-------------------|---------------------|---------------------|---------------------|---------------|
| Cable001 | D0 : 10 | D0 : 10 | D0 : 11 | D0 : 20 | D0 : 20 | D0 : 30 | MARGINAL PASS |
| | D1 : 10 | D1 : 10 | D1 : 15 | D1 : 20 | D1 : 22 | D1 : 35 | |
| | D2 : 10 | D2 : 10 | D2 : 20 | D2 : 22 | D2 : 28 | D2 : 30 | |

Figure 4.14. Sample Test Report

4.2.2. Batch mode

When running in the batch mode:

- Check the Batch Test checkbox (Figure 4.15).
- Select item(s) in the Test List area (Figure 4.15).
- Use Repeat Times listbox to select how many times to repeat the test.
- When Auto Increase checkbox is checked, Cable Name will be changed to Cable002 and increase after each complete test run.

If the Auto Increase checkbox is not checked, Cable Name remains the same after each test.

- Click Run (Figure 4.10).
- Follow the instructions in the Test Log area to run the Cable Loop-back test (Figure 4.15).

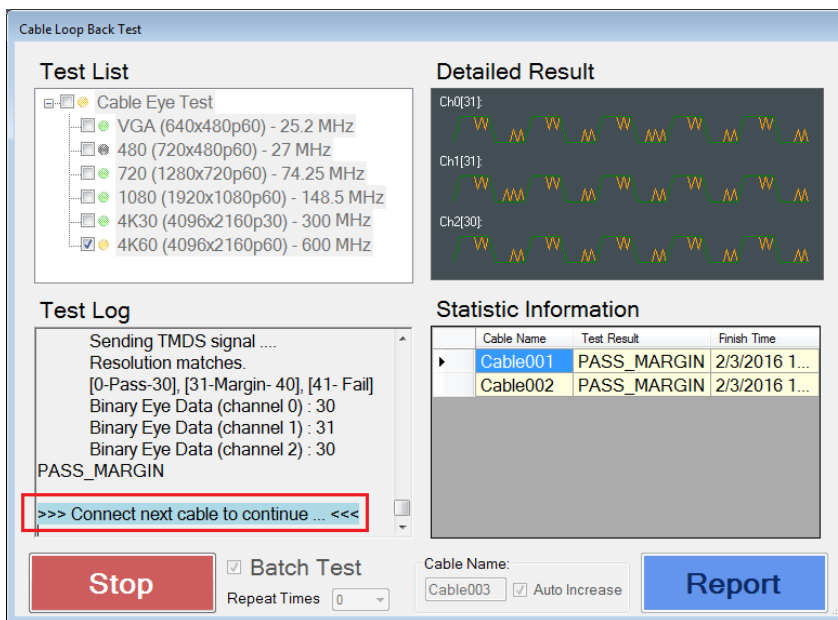


Figure 4.15. Cable Loop Test in the Batch Mode

Notes:

Except running in Batch Test mode, you need to check all resolutions under Cable Loop-back Test window to see a result in Statistic Information area.

- After the testing is completed, click the item in the Test List area. The detailed result will be shown in the Detailed Result area (Figure 4.16). The green lines show the ideal signal waveform. The orange triangles show the noise jitter detected during the test.

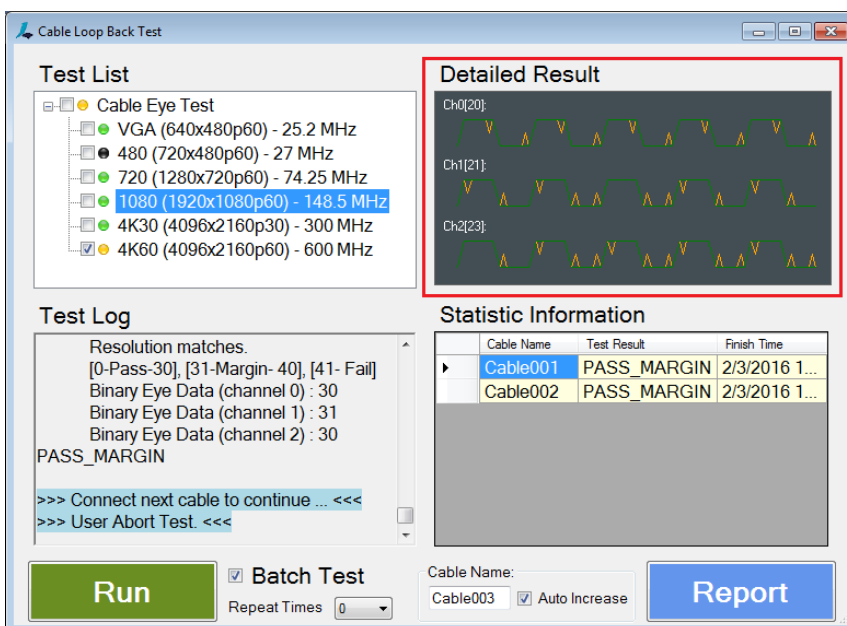


Figure 4.16. Cable Loop Test - Detailed Result Area

- Click the Report button (Figure 4.16). The Report file in HTML format is opened, and is automatically saved under Documents\SimplayAVG folder, name of which is CableTestSummary.html.
- Items in the Statistic Information area can be deleted (Figure 4.16) by selecting an item row and pressing the delete key (on your keyboard).

4.3. Monitoring DDC

1. From the AVG software main window of your test computer (Figure 3.16), click DDC (I2C) Activity Monitor. The DDC (I2C) Monitor window appears (Figure 4.17).
2. From the DDC Monitor window, to decide which DDC bus to monitor, select the Rx Port, Tx Port, or External radio button.

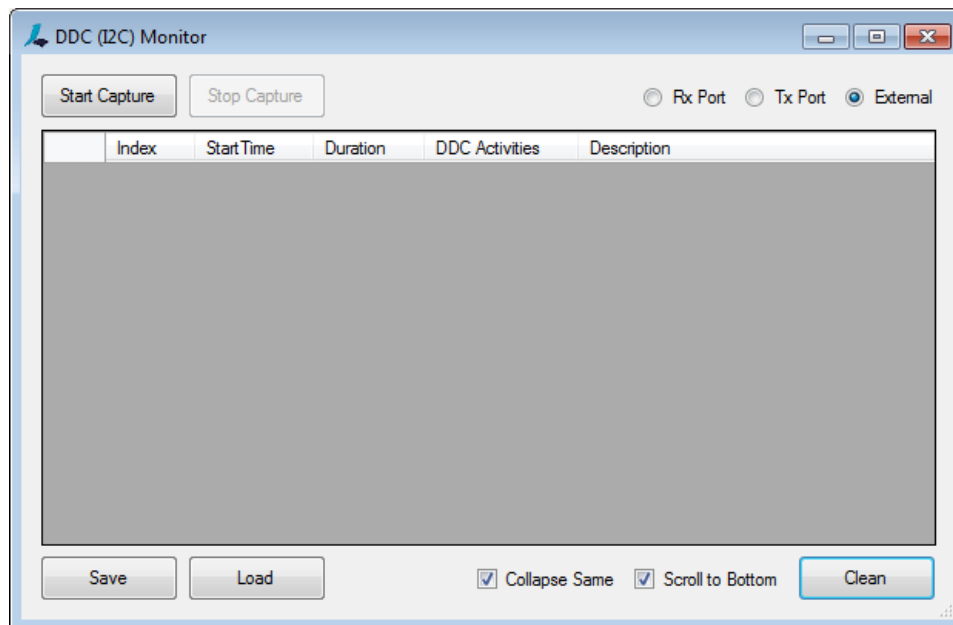


Figure 4.17. DDC Monitor Test Window

- When you select the Rx Port radio button, a dialog pops up (Figure 4.18) asking you to connect the source device to the test computer. After the connection is set up, click OK.

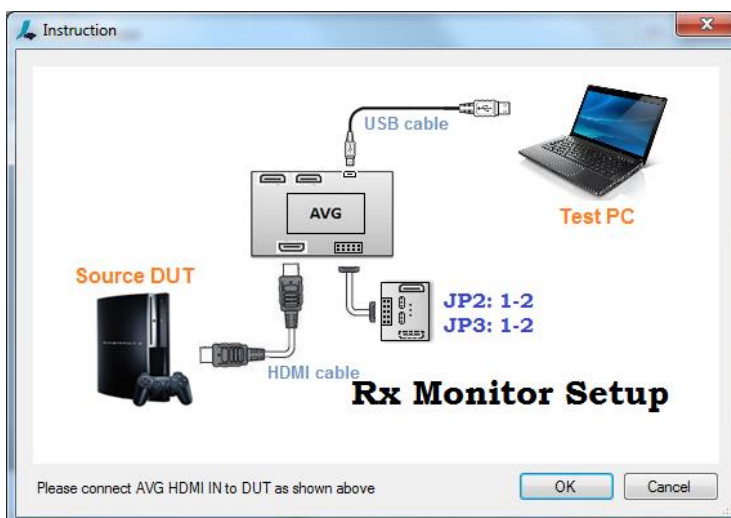


Figure 4.18. Input Port Monitor Instruction Dialog

- When you select the Tx Port radio button, a dialog pops up (Figure 4.19) asking you to connect the sink device to the test computer. After the connection is set up, click OK.

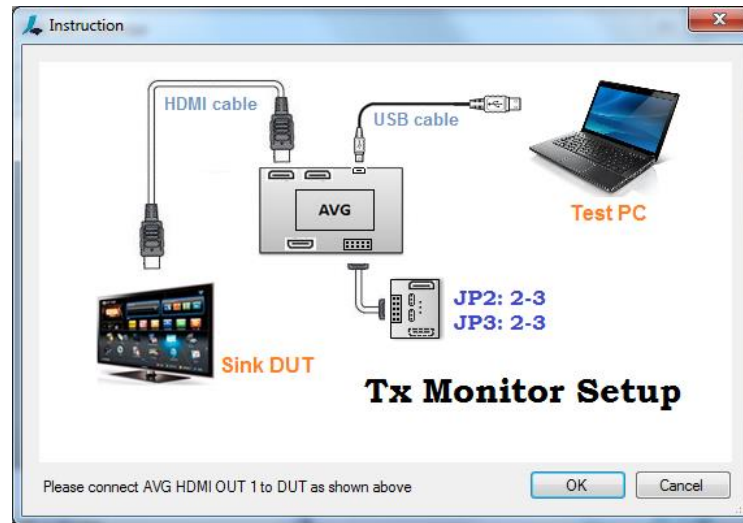


Figure 4.19. Output Port Monitor Instruction Dialog

- When you select the External radio button, a dialog pops up (Figure 4.20) asking you to connect the sink and source devices to the test computer. After the connection is set up, click OK.

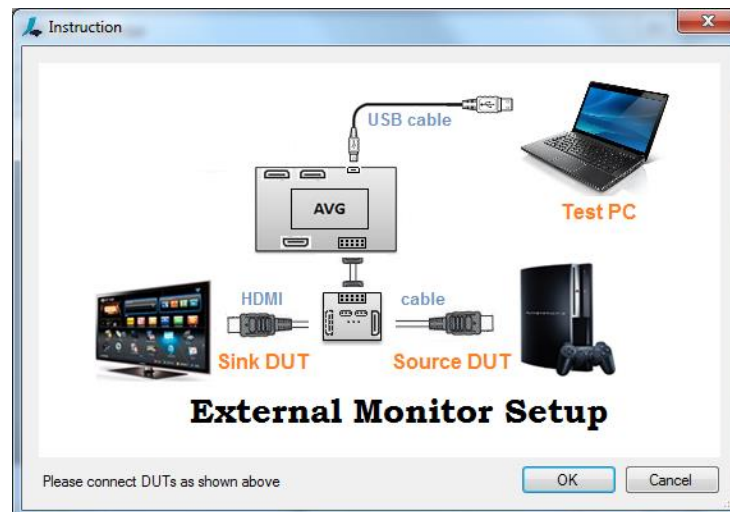
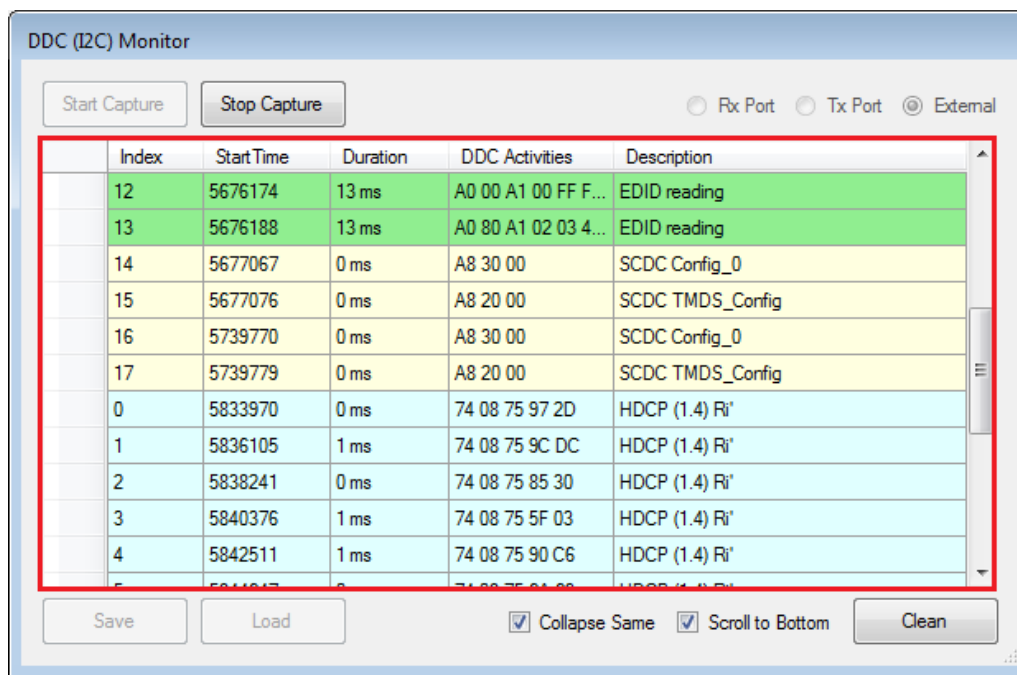


Figure 4.20. Pass Through Monitor Instruction Dialog

- Click the Start Capture button to start the DDC monitor (Figure 4.21). DDC activities are logged and decoded.



DDC (I2C) Monitor

Start Capture Stop Capture Rx Port Tx Port External

| | Index | Start Time | Duration | DDC Activities | Description |
|--|-------|------------|----------|---------------------|------------------|
| | 12 | 5676174 | 13 ms | A0 00 A1 00 FF F... | EDID reading |
| | 13 | 5676188 | 13 ms | A0 80 A1 02 03 4... | EDID reading |
| | 14 | 5677067 | 0 ms | A8 30 00 | SCDC Config_0 |
| | 15 | 5677076 | 0 ms | A8 20 00 | SCDC TMDS_Config |
| | 16 | 5739770 | 0 ms | A8 30 00 | SCDC Config_0 |
| | 17 | 5739779 | 0 ms | A8 20 00 | SCDC TMDS_Config |
| | 0 | 5833970 | 0 ms | 74 08 75 97 2D | HDCP (1.4) Ri' |
| | 1 | 5836105 | 1 ms | 74 08 75 9C DC | HDCP (1.4) Ri' |
| | 2 | 5838241 | 0 ms | 74 08 75 85 30 | HDCP (1.4) Ri' |
| | 3 | 5840376 | 1 ms | 74 08 75 5F 03 | HDCP (1.4) Ri' |
| | 4 | 5842511 | 1 ms | 74 08 75 90 C6 | HDCP (1.4) Ri' |
| | 5 | 5844647 | 0 ms | 74 08 75 81 00 | HDCP (1.4) Ri' |

Save Load Collapse Same Scroll to Bottom Clean

Figure 4.21. DDC Monitor Activities Window

- Check Scroll to Bottom option (Figure 4.21) to scroll the current log to the bottom.
- Check Collapse Same option (Figure 4.21) to collapse the same log.
- Click the Clean button (Figure 4.21) to clean the current log and decoding data displayed in the window when necessary.
- Click the Save button (Figure 4.21) to save the current log to local PC.
- Click the Load button (Figure 4.21) to load back log file from PC.
- Right click the log area, the area in red box (Figure 4.21), to show filter items.
- Check or uncheck the filter items (Figure 4.22) to show different DDC log accordingly.

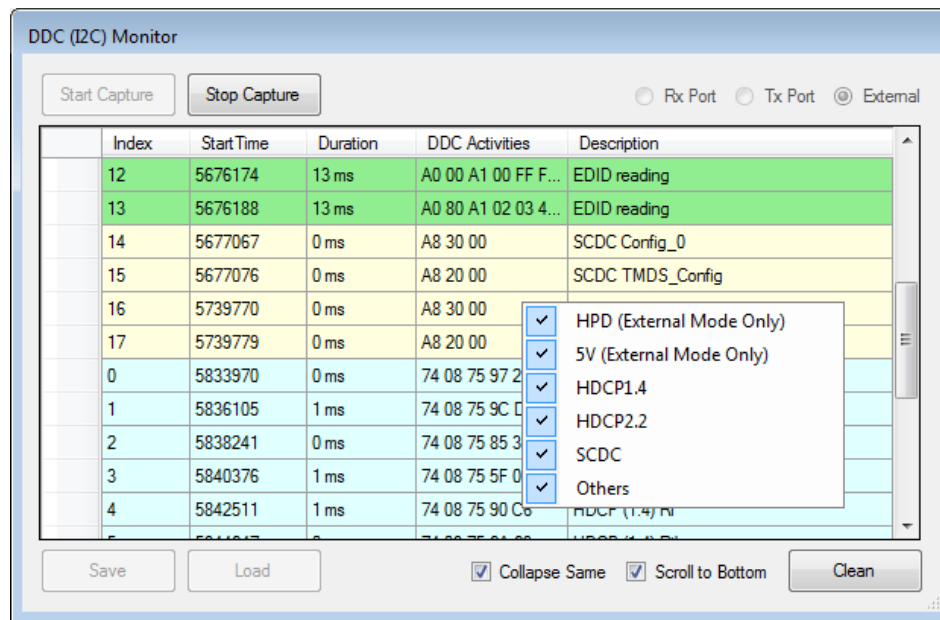


Figure 4.22. DDC Log Filter

4.4. Editing EDID

1. From the AVG software main window of your test computer (Figure 3.16), click Load or Edit Reference EDID.
2. From the EDID Editor window, select the EDID which you want to review, edit or program to the SL-881 (Figure 4.23).

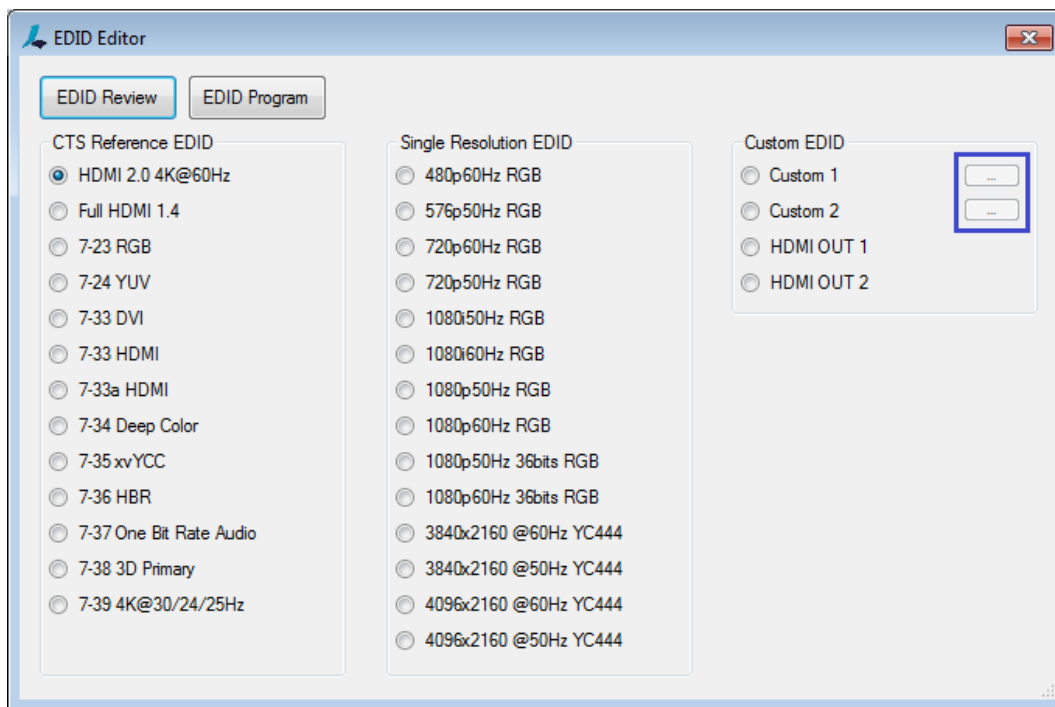


Figure 4.23. EDID Editor Test Window

- Reviewing EDID file
To review selected EDID data, click the EDID Review button (Figure 4.23). EDID Review/Edit window appears (Figure 4.24). Contents of the EDID file are displayed.

Figure 4.24. EDID Review/Edit Window

- Editing selected EDID data

You can load your own EDID file. After that, you can edit the EDID file.

 - Loading Customer's EDID data
 - A. Choose Custom 1 from the Custom EDID area (Figure 4.23). If you need to load second EDID data, choose Custom 2. Custom 1 and Custom 2 can be chosen randomly.
 - B. Click "..." (the blue box in Figure 4.23) to load customer's EDID data, in either binary (*.bin) or text (*.txt) format. When customer's EDID data is selected to load, the EDID Review button changes to the EDID Edit button in the EDID Editor Test window.
 - C. Click the EDID Edit button. EDID contents are displayed in detail in the EDID Review/Edit window (Figure 4.24).
 - Modifying the EDID contents.
 - A. Select the tab, contents of which you want to modify (Figure 4.24).
 - B. Modify the data on that tab.
 - C. Click the Update Data button to apply the changes. If you need to go back to the original data, click the Reload Data button to reload the original EDID contents.
 - D. Click Save as to save the modified EDID contents. You can save the contents in text (*.txt) or binary (*.bin) format.

- Programming EDID file
To program selected EDID data into EDID contents of the SL-881 HDMI IN port, click the EDID Program button (Figure 4.23). Once the programming completes successfully, a dialog pops up (Figure 4.25). Click OK.

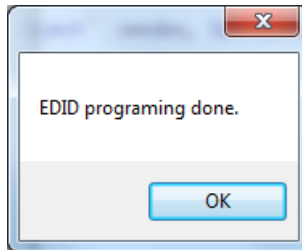


Figure 4.25. EDID Program Done Dialog

4.5. Running with Console Application of Windows

This section describes how to use a console interface to control the SL-881 AVG platform.

Note: This function is available since SL-881 AVG software version 1.16 and hardware version 2.10015008. To download the software, refer to [Downloading the SL-881 AVG Software](#).

4.5.1. Hardware and Software Requirements

The following hardware and software are required to run the SL-881 with console control:

- Hardware requirements:
 - SL-881 AVG platform (Figure 1.1)
 - USB A to USB mini-B cable
- Software requirements:
 - Console application of Windows (cmd.exe)
 - AVG_Console.exe

4.5.2. Getting Started

Follow the procedures described in this section to setup the console application.

1. Power on the SL-881.
2. Connect mini-B cable from PC to the SL-881.
3. Invoke Command Prompt window.
4. From the Windows explorer, navigate to the folder where AVG_Console.exe locates.

A typical location is "C:\Program Files (x86)\Simplay Labs\Simplay AVG".

Manually typing the path of AVG_Console.exe in the Command Prompt window (Figure 4.26).

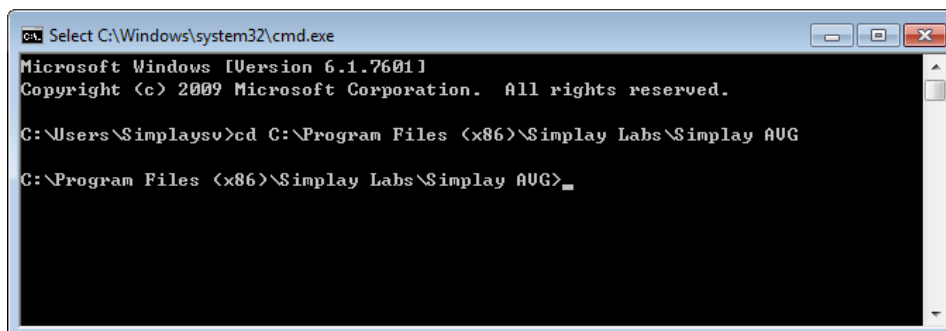
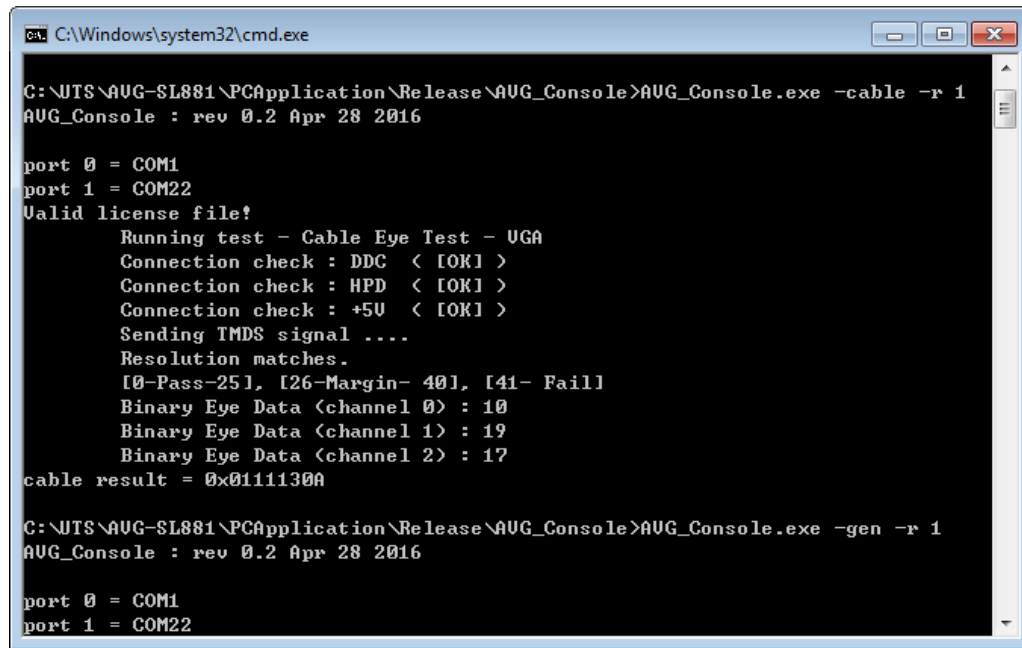


Figure 4.26. Entering AVG_Console.exe Path

- Run "AVG_Console.exe" with parameters (Figure 4.27). Supported parameters are listed in Table 4.1.



```

C:\Windows\system32\cmd.exe

C:\JTS\AVG-SL881\PCApplication\Release\AVG_Console>AVG_Console.exe -cable -r 1
AVG_Console : rev 0.2 Apr 28 2016

port 0 = COM1
port 1 = COM22
Valid license file!
Running test - Cable Eye Test - UGA
Connection check : DDC < [OK] >
Connection check : HPD < [OK] >
Connection check : +5V < [OK] >
Sending TMDS signal ....
Resolution matches.
[0-Pass-25], [26-Margin- 40], [41- Fail]
Binary Eye Data <channel 0> : 10
Binary Eye Data <channel 1> : 19
Binary Eye Data <channel 2> : 17
cable result = 0x01111300

C:\JTS\AVG-SL881\PCApplication\Release\AVG_Console>AVG_Console.exe -gen -r 1
AVG_Console : rev 0.2 Apr 28 2016

port 0 = COM1
port 1 = COM22
  
```

Figure 4.27. Running AV_Console.exe with Parameters

Table 4.1. Supported Parameters

| Features | -Parameter | -Argu | Details | Returns |
|--------------------|------------|-------|-----------------------------------------------------------------------------------------------------------------------------------------------------------------------------|--------------------------------------------------------------------------------------------------------------------------------------------------------------------------------------------------------------------------------------------------------------------------------------------------------------------------------------------------------------------------------------------------------------|
| Video Transmitting | -gen | -r | 1 : 640x480p60 2/3: 720x480p60 4: 1280x720p60 16: 1920x1080p60 17/18: 720x576p50 19: 1280x720p50 31: 1920x1080p50 95: 3840x2160p30 97: 3840x2160p60 | 0: Success -1: Failed |
| | | -hdcp | 0/1/2/3 | 0: Auto 1: Force 1.4 2: Force 2.2 3: Off |
| | | -cs | 0/1/2/3 | 0: RGB 1: YCbCr 4:2:0 2: YCbCr 4:2:2 3: YCbCr 4:4:4 |
| | | -st | 0/1/2 | 0: Auto 1: HDMI 2: DVI |
| | | -cd | 0/1/2 | 0: 8 bit 1: 10 bit 2: 12 bit |
| | | -p | 0/1/.../22 | 0: color_bar75 1: half_red75 2: half_green75 3: half_blue75 4: half_magenta75 5: half_cyan75 6: half_yellow75 7: half_white75 8: black 9: checkerboard 10: bluescreen 11: doublepluge 12: sharpness 13: colortint 14: grayramp 15: evothvline 16: freqsweep 17: frmgeom 18: rgbgray 19: rgb3bars 20: half_clrbars75 21: diagram 22: hrdemo |
| Cable Loop Test | -cable | -r | 1 : 640x480p60 2/3: 720x480p60 4: 1280x720p60 16: 1920x1080p60 95: 3840x2160p30 97: 3840x2160p60 | 32-bit value: Bits 7-0 channel 0 result count Bits 15-8 channel 1 result count Bits 23-16 channel 2 result count Bits 24-31 flags 25,24: (0- Inconclusive; 1- Pass; 2- Fail; 3- Pass_Margin) 26: DDC connection error 27: HPD connection error 28: +5 V connection error 29: resolution mismatch |
| | | -conn | 0/1 | 0: Skip cable connection check 1: Run with cable connection check |

4.5.3. Examples of Parameter Usages

In the Command Prompt window, you can run “AVG_Console.exe” with different parameters.

Following are the examples of parameter usage for different purposes:

| Purpose | Command |
|----------------------------------------------------------------------------------------|---------------------------------------|
| To generate resolution 1920 x 1080p @ 60 Hz | >AVG_Console.exe -gen -r 16 |
| To generate resolution 4K YCbCr 4:2:0 | >AVG_Console.exe -gen -r 97 -cs 1 |
| To run a “Cable Loop Test” for 4K @ 60 Hz resolution | >AVG_Console.exe -cable -r 97 |
| To run a “Cable Loop Test” for 4K @ 60 Hz resolution without cable connection checking | >AVG_Console.exe -cable -r 97 -conn 0 |

Appendix A. Internal Firmware Upgrade

If you received firmware upgrade notification from Simplay Labs, or if you find issues or problems in the firmware, use the files in the firmware folder to make upgrade.

You can download the latest SL-881 AVG firmware installation package from Simplay Labs website http://www.simplaylabs.com/support/product_support.aspx. Choose "SL-881". There is only one package in the *zip downloaded (Figure A.1). The package contains firmware installation files.

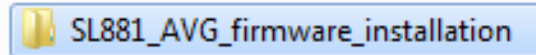


Figure A.1. SL-881 Firmware Installation Package

The SL881_AVG_firmware_installation folder contains one AVG.bin file (Figure A.2), which is to be used below.

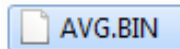


Figure A.2. SL-881 Firmware binary file

Follow the steps below to perform the SL-881 firmware update.

1. Copy the AVG.bin files you downloaded to the SD card.
2. Plug in the SD card and power on the SL-881.
3. The SL-881 LCD touch screen main window appears (as shown in Figure 1.5). From now on, all the operation is performed on the SL-881 AVG.
4. Choose Settings.
5. In the System Settings window (Figure A.3), you can see the current version information. Write down the System FW Version, Video Transceiver Version and RTL Version for a later check.

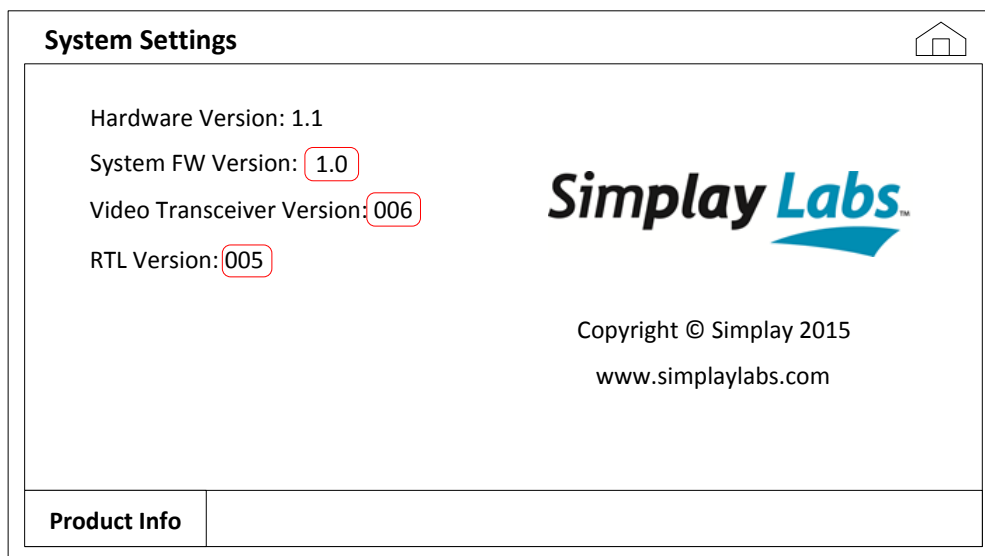


Figure A.3. System Settings Window Shown on the SL-881 LCD Touch Screen

6. Power off the SL-881.
7. Pin and hold the UPG button (item 11 in Figure 1.4) of the SL-881. Power on the SL-881.

8. Firmware update starts running automatically ([Figure A.4](#)). You can release the UPG button now.

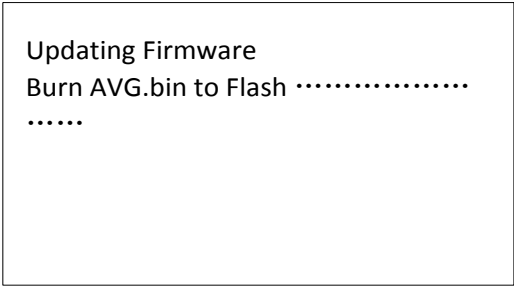


Figure A.4. Image Update Window Shown on the SL-881 LCD Touch Screen

9. After that step is done, Video Transceiver and RTL firmware will be updated automatically as shown in [Figure A.5](#).

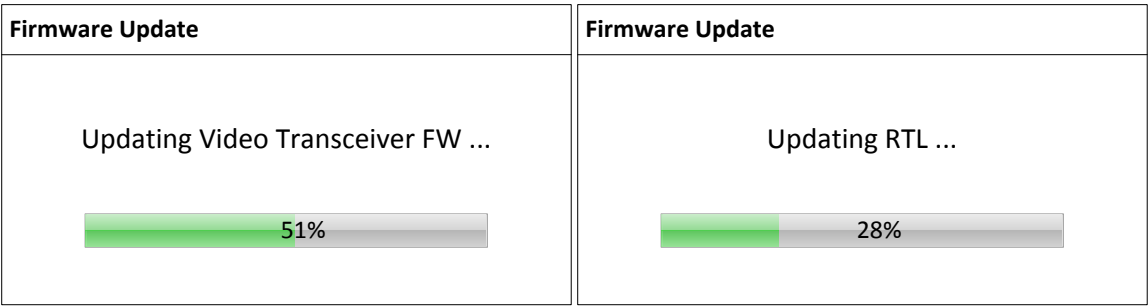


Figure A.5. Transceiver FW and RTL Updating Windows shown on the SL-881 LCD Touch Screen

10. After all firmware is updated successfully, follow the instruction to power off then power on the SL-881, as shown in [Figure A.6](#).

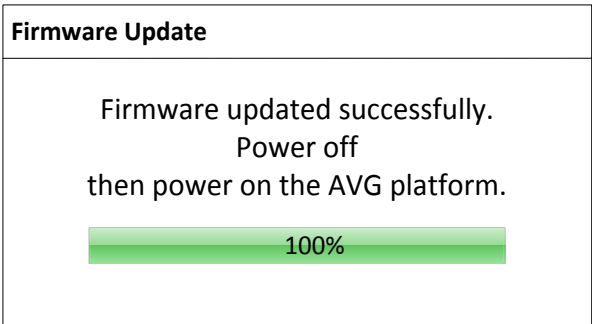


Figure A.6. Image Update Completed Window Shown on the SL-881 LCD Touch Screen

To confirm whether or not the firmware update is successful, follow the steps below:

1. After you power on the SL-881 again, go back to the LCD touch screen main window (Figure 1.5). Click Settings.
2. The System Settings window appears. Compare the System FW Version, Video Transceiver Version and RTL Version in the current window (Figure A.7) with the one (Figure A.3) you have written down. If the version number changes as expected, the firmware is updated successfully.

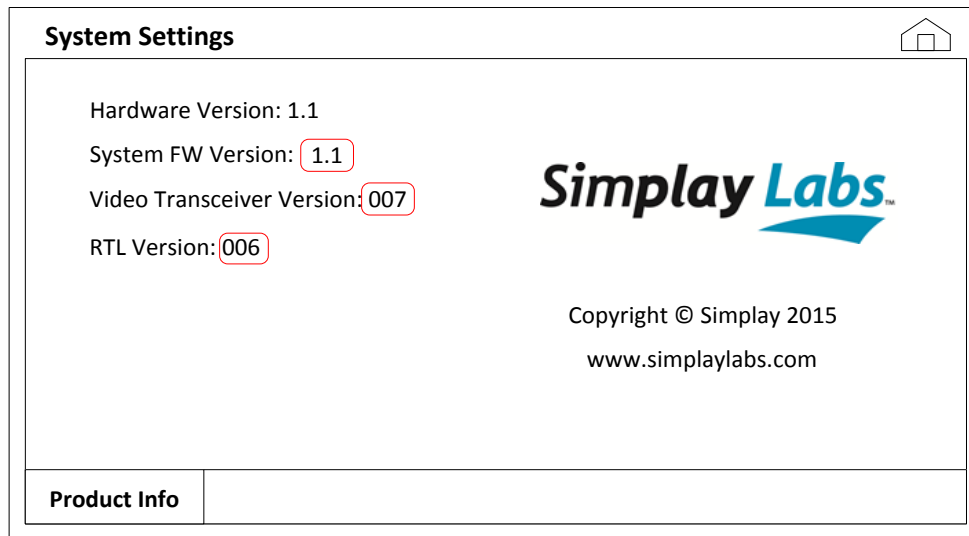


Figure A.7. System Settings Window after Successful Firmware Updating

Appendix B. LCD Touch Screen Position Calibration

The SL-881 AVG LCD touch screen has been calibrated before shipping out. In case you need to calibrate touch screen position, follow steps below. All the operation in this section is performed on the SL-881.

1. Press the UPG button (item 11 in [Figure 1.4](#)) first, and then press the Reset button (item 13 in [Figure 1.4](#)) to reset the SL-881. After the SL-881 completes resetting, the Touch Screen Calibration window appears. See [Figure B.1](#).

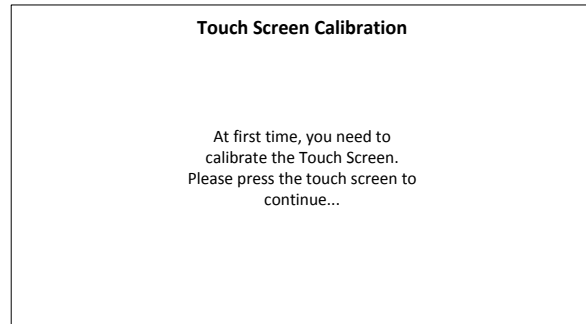


Figure B.1. Touch Screen Calibration Window Shown on the SL-881 LCD Touch Screen

2. Touch any position on the touch screen to start the calibration.
3. A message appears on the top left corner on the touch screen ([Figure B.2](#)). Follow the instruction, press the circle.

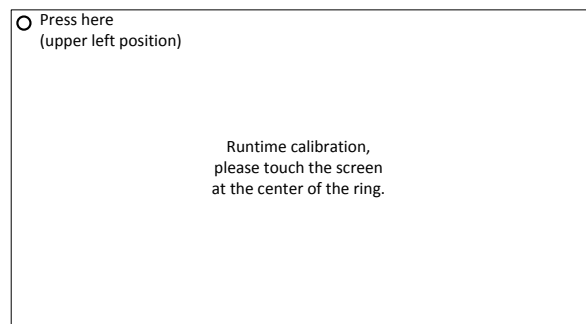


Figure B.2. Click Circle on the Top Left Corner

4. After that, another message appears on the lower right corner on the touch screen ([Figure B.3](#)). Follow the instruction, press the circle. The touch screen position calibration is finished.

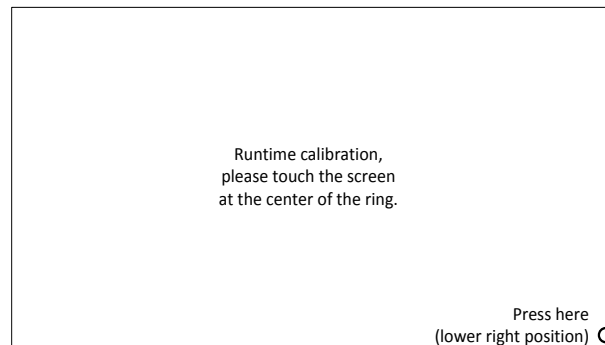


Figure B.3. Click Circle on the Lower Right Corner

5. After the position calibration is completed, the SL-881 will go back to the LCD Touch Screen main window ([Figure 1.5](#)).

References

This is a list of the standards abbreviations appearing in this document.

| Abbreviation | Standards Publication, Organization, and Date |
|--------------|-----------------------------------------------------------------------------------------------------------------|
| HDMI | <i>High Definition Multimedia Interface</i> Version 2.0, HDMI, LLC, September 4, 2013 |
| HDMI CTS | <i>High-Definition Multimedia Interface Version 2.0 Generic Compliance Test Specification</i> , October 4, 2013 |

Revision History

Revision C, September 2016

Summary of Changes and Additions:

Added MHL connection and console application to the SL-881 AVG platform. Updated SL-881 AVG Software with HDR Debug test and DDC waveform viewer features.

Details of the changes and additions:

- Updated [Figure 1.5. LCD Touch Screen Main Window](#).
- Added [Figure 2.3. Connecting with MHL Source Device in Stand-alone Mode](#) and [Figure 2.4. Connecting with MHL Sink Device in Stand-alone Mode](#).
- Added MHL related contents to step 1 in both [Generating Video Signals When Running with Sink Devices](#) and [Analyzing Input Signal When Running with Source Devices](#) sections.
- Updated [Figure 2.7. Read EDID from Sink DUT Window](#).
- Added step 7, step 8, and step 8 to the [Performing EDDC Compliance Test](#) section.
- Changed “Finish Time” in [Figure 4.9. Sample Test Report](#) and [Figure 4.14. Sample Test Report](#).
- Added step 7 to the [Monitoring DDC](#) section.
- Added the [Running with Console Application of Windows](#) section.

Revision B, March 2016

Summary of Changes and Additions:

- Added HDR support in the [Analyzing Input Signal When Running with Source Devices](#) section.
- Added Cable Loop-back Testing in the [Running Cable Loop-back Test](#) section.

Revision A, August 2015

First production release.

General Warranty Terms

Simplay Labs, LLC., (Simplay Labs), a Lattice Semiconductor company, offers a limited warranty for its Simplay Labs products. Any product first sold to your business is guaranteed to be free from defects in both components and workmanship under regular uses. The warranty period commences on the date the item ships.

Attention: Your invoice with the date of purchase, model number and serial number of the product is your proof of the date of purchase.

This International Limited Warranty is applicable and shall be honored in every country where Simplay Labs or its Authorized Service Providers offer warranty service subject to the terms and conditions provided in this International Limited Warranty Statement.

Simplay Labs Products Warranty Period

| | |
|-------------------------------------------------------------------|---------|
| The warranty terms for Simplay Labs products are: Domestic & Asia | EU & UK |
| 1 Year | 2 Year |

The International Limited warranty does not affect your statutory rights.

System Warranty

During the warranty period, the defective hardware of Simplay Labs products will be either repaired or replaced, with new or like new products, at the discretion of Simplay Labs except in the cases listed in the Limitation of Liability Clause of this document.

This International Limited Warranty covers the costs of service parts and labor required to restore your product to fully functional condition. Simplay Labs will, at its discretion, repair or replace any defective products or parts thereof covered by this International Limited warranty with refurbished parts of the product that are equivalent to new or like new products in both functionality and performance. A product or part that is repaired or replaced under this International Limited warranty shall be covered for the remainder of the original warranty period applying to the product or part, or for 90-days, whichever expires last. All exchanged parts and products under this International Limited Warranty will become the property of Simplay Labs.

Software Limited Warranty

Simplay Labs offers no warranty, either explicitly expressed or implicitly implied, for any pre-installed software, its quality, performance, functionality, or compatibility for a particular purpose. Nor does Simplay Labs warrant that the functions contained in the software will meet specific requirements or that the operation of the software will be uninterrupted or error-free. Thus, the software is sold 'as is' unless otherwise explicitly stated in writing.

Obtaining the Warranty Service

Warranty service or Returned Merchandise Authorization (RMA) under this International Limited Warranty will be honored only if claims are made within the warranty period. For notifications to Simplay Labs or products outside the warranty period, the process will be the same, but charges may apply. Contact details may be obtained on Simplay Labs website (www.simplaylabs.com/support). Customers are requested to perform the following actions before claiming Simplay Labs product as defective:

Owner must notify Simplay Labs, during the warranty period, in writing of alleged defect, and allow Simplay Labs a reasonable opportunity to inspect the allegedly defective product;

No Product may be returned without Simplay Labs' consent, The Simplay Labs RMA# must accompany all returns, and all returns must be delivered to Simplay Labs within the warranty period;

Owner may, then at its own expense, return the allegedly defective Product, freight pre-paid and in the original packaging, accompanied by a brief statement explaining the alleged defect to Simplay Labs;

If Simplay Labs determines that any returned Product is not defective, or if Simplay Labs determines that the defect is not covered by the warranty, Simplay Labs will return the Product to the Owner at Owner's expense, freight collect, and Owner agrees to pay Simplay Labs' reasonable cost of handling and testing;

Upon determining that a returned product is defective, to receive warranty service Owner will need to present the invoice showing the original purchase transaction. If shipping the product, Owner will need to package it carefully and send it, transportation prepaid by a traceable, insured method, to the Simplay Labs Service Center. Package the product using adequate padding material to prevent damage in transit. The original container is ideal for this purpose. Include the RMA#, your name, return shipping address, email address and telephone number where you may be reached during business hours, inside the shipping package with the unit. Any replacement unit will be warranted under these Terms and Conditions for the remainder of the original warranty period or ninety (90) days whichever is longer.

Make sure to back up any important data and remove all confidential, proprietary information. Neither Simplay Labs nor its authorized service centers are responsible for damages to or loss of any programs, data, or other software and files in the items.

Refer to user manual enclosed within the product package and/or information on www.simplaylabs.com/support for important tips on how to operate and troubleshoot the product

International Warranty

Warranty may be valid when a Simplay Labs product is purchased in one country and transferred to another country, without voiding the warranty. Please be advised that service availability and response time may vary from country to country.

Simplay Labs is not responsible for any export and import control issues, handling fees, tariffs, import duties, and all other related fees where owner is responsible for shipping its products.

Disclaimer of Warranty

THIS WARRANTY IS EXPRESSED IN LIEU OF ALL OTHER WARRANTIES, EXPRESSED OR IMPLIED, INCLUDING THE IMPLIED WARRANTY OF MERCHANTABILITY, THE IMPLIED WARRANTY OF FITNESS FOR A PARTICULAR PURPOSE AND OF ALL OTHER OBLIGATIONS OR LIABILITIES ON SIMPLAY LAB'S PART, AND IT NEITHER ASSUMES NOR AUTHORIZES ANY OTHER PARTY TO ASSUME FOR SIMPLAY LABS ANY OTHER LIABILITIES. THE FOREGOING CONSTITUTES THE BUYER'S SOLE AND EXCLUSIVE REMEDY FOR THE FURNISHING OF DEFECTIVE OR NONCONFORMING PRODUCTS AND SIMPLAY LABS WILL NOT IN ANY EVENT BE LIABLE FOR COST OF SUBSTITUTE OR REPLACEMENT, COST OF FACILITIES OR SERVICE, DOWNTIME COSTS, LOSS OF PROFITS, REVENUES OR GOODWILL, RELIANCE DAMAGES, LOSS OF DATA, LOSS OF USE IF OR DAMAGE TO ANY ASSOCIATED EQUIPMENT, OR ANY OTHER INDIRECT, INCIDENTAL, SPECIAL, OR CONSEQUENTIAL DAMAGES BY REASON OF THE FACT THAT SUCH PRODUCTS WILL HAVE BEEN DETERMINED TO BE DEFECTIVE OR NONCONFORMING.

THE RIGHTS AND OBLIGATIONS OF THE PARTIES UNDER THIS AGREEMENT SHALL NOT BE GOVERNED BY THE PROVISIONS OF THE 1980 U.S. CONVENTION ON CONTRACTS FOR THE INTERNATIONAL SALE OF GOODS OR THE UNITED NATIONS CONVENTION ON THE LIMITATION PERIOD IN THE INTERNATIONAL SALE OF GOODS, AS AMENDED (COLLECTIVELY, THE "CONVENTIONS"); RATHER, THE RIGHTS AND OBLIGATIONS OF THE PARTIES SHALL BE GOVERNED BY THE LAWS OF THE STATE OF CALIFORNIA, INCLUDING ITS PROVISIONS OF THE UNIFORM COMMERCIAL CODE. FOR THE AVOIDANCE OF DOUBT, THE CONVENTIONS ARE HEREBY EXCLUDED.

This Limited Warranty gives you specific legal rights. You may also have other rights that may vary from state to state or from country to country. You are advised to consult applicable state or country laws for full determination of your rights.

Simplay Labs products are not designed for any "critical applications." "Critical applications" shall mean life support systems, medical applications, connections to implanted medical devices, commercial transportation, nuclear facilities or systems or any other applications where product failure could lead to injury to persons or loss of life or property damage.

Copyright Notice

Copyright © 2016 Simplay Labs, LLC., a Lattice Semiconductor company. All rights reserved.

Trademark Acknowledgment

Simplay®, Simplay HD®, Simplay HD logo, Simplay Labs™ and Simplay Labs logo are trademarks or registered trademarks of Silicon Image, Inc. in the United States and/or other countries. HDMI® and the HDMI logo are trademarks or registered trademarks of, and are used under license from, HDMI Licensing, LLC. in the United States or other countries. MHL® and the MHL logo are trademarks or registered trademarks of, and are used under license from, MHL, LLC. in the United States or other countries. All other trademarks and registered trademarks are the property of their respective owners in the United States and/or other countries.

HDMI Licensing, LLC; MHL, LLC, and Simplay Labs, LLC are wholly owned subsidiaries of Lattice Semiconductor, Inc.

The absence of a trademark symbol does not constitute a waiver of the trademarks owner's rights or other intellectual property rights with regard to a product name, logo or slogan.

Export Controlled Document

This document contains materials subject to the Export Administration Regulations. Transfer of this information by any means to a foreign destination may require a license. These materials shall not, in the absence of authorization under U.S. and local law and regulations, as required, be used by or exported or re-exported to (i) any U.S. sanctioned or embargoed country, or to nationals or residents of such countries; or (ii) any person, entity, organization or other party identified on the U.S. Department of Commerce's Denied Persons or Entity List, the U.S. Department of Treasury's Specially Designated Nationals or Blocked Persons List, or the Department of State's Debarred Parties List, as published and revised from time to time; (iii) any party engaged in nuclear, chemical/biological weapons or missile proliferation activities; or (iv) any party for use in the design, development, or production of rocket systems or unmanned air vehicles.

Limitation of Liability

Simplay Labs reserves the rights to refuse warranty service of products under disputable conditions. Simplay Labs also holds the rights to declare final decision whether products are within warranty conditions. The following actions and damages will result in voiding the limited warranty:

Damage caused by act of nature, such as fire, flood, wind, earthquake, lightning, etc.

Damage or incompatibility caused by failure to perform a proper installation or to provide an appropriate operational environment for the product, including but not limited to unstable wired/ wireless network connection and phone lines, bad grounding, external electro-magnetic fields, direct sunlight, high humidity and vibration.

- Damage caused by impact with other objects, dropping, falls, spilled liquids, or submersion in liquids.
- Damage caused by unauthorized repair or disassembling of the product.
- Damage caused by any other abuse, misuse, mishandling, or misapplication.
- Damage caused by third party peripherals (including but not limited to visible damages on motherboard or other electronic parts of the product such as burn spots after electric discharge, melting, fusing, splitting, etc.).
- Any unauthorized software or modification of built-in software not approved by Simplay Labs.
- The serial number of the product (or serial number stickers of its parts) has been modified, removed, blurred or damaged.
- Cracks and scratches on LCD and plastic material as well as other defects caused by transportation, handling or customer abuse.



Simplay Labs, LLC
5555 NE Moore Court
Hillsboro, OR 97214
1-503-268-8000
www.simplaylabs.com